

Product datasheet for **CS803095**

Tissue FFPE Sections, Lung

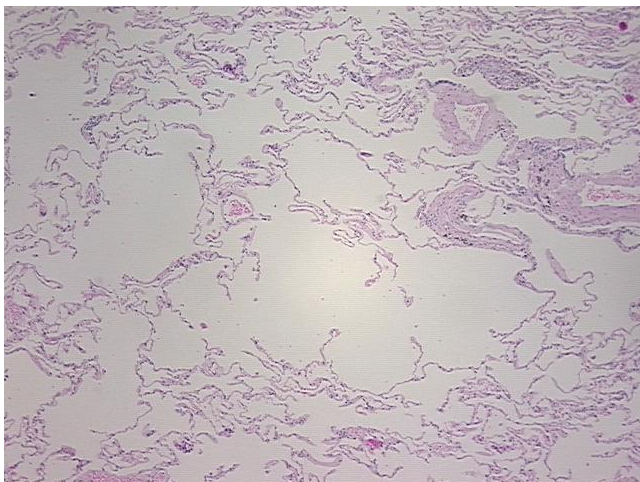
Product data:

Product Type:	FFPE Sections
Disease State:	Other Disease
Diagnosis Category:	Chronic Obstructive Pulmonary Disease (COPD)
Tissue:	Lung
Frozen Sample ID:	PA15476F29
Case ID:	CU0000001632
Tissue of Origin:	Lung
Site of Finding:	Lung
Appearance:	L
Sample Diagnosis (from Pathology Verification):	Emphysema, centrilobular
Normal:	0%
Lesional:	100%
Tumor:	0%
Tumor Hypo/Acellular Stroma:	0%
Tumor Hypercellular Stroma:	0%
Necrosis:	0%
Pathology Verification notes from H&E review:	85% alveoli, 5% bronchioles, 10% fibrovascular septa
CASE Diagnosis (from medical center path report):	Adenocarcinoma of lung
Age:	76
Gender:	Male
Tumor Grade:	AJCC G3: Poorly differentiated

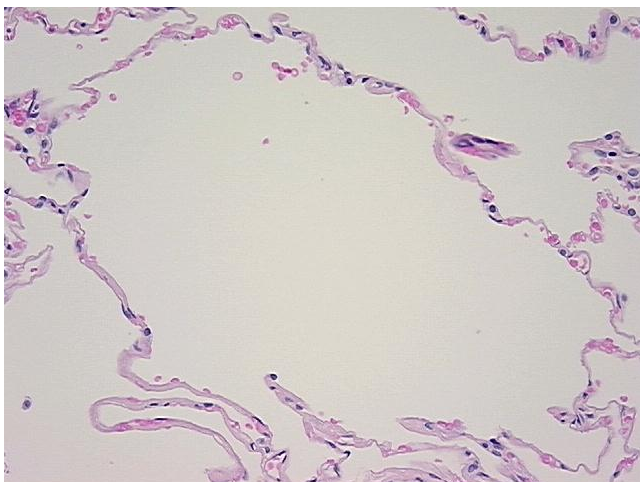


[View online »](#)

Minimum Stage Grouping:	IA
T (Extent of Primary Tumor):	T1
N (Lymph node metastasis):	N0
M (Distant metastasis):	MX
Diagnostic Test Results:	Cytokeratin (Pan) ~ Keratin, Pan ! by IHC,Positive; Synaptophysin ~ SYN ! by IHC,Negative; Chromogranin A ~ Parathyroid secretory protein 1 ! by IHC,Negative
Storage:	Store FFPE tissue sections at +4°C.
Stability:	All FFPE tissue sections are stable for 1 year from date of purchase.

Product images:

4x Image



20x Image