

## Product datasheet for **CS802883**

### Tissue FFPE Sections, Colon

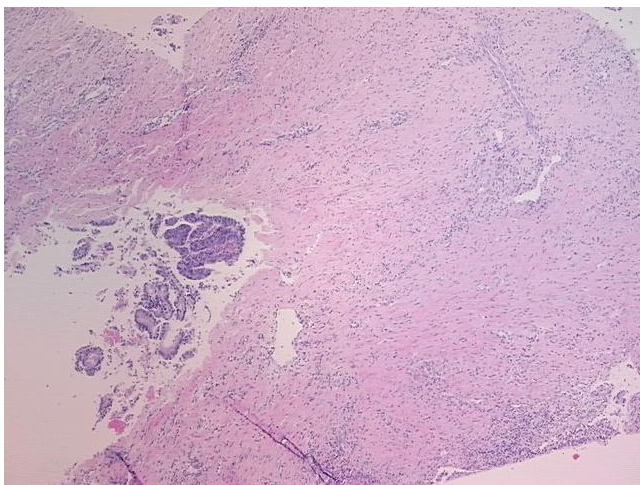
#### Product data:

|   |  |
|---|--|
| Product Type:                                     | FFPE Sections  |
| Disease State:                                    | Cancer   |
| Diagnosis Category:                               | Colorectal Cancer  |
| Tissue:   | Colon  |
| Frozen Sample ID:                                 | PA00001DE3   |
| Case ID:  | CU0000001544   |
| Tissue of Origin:                                 | Colon  |
| Site of Finding:                                  | Colon  |
| Appearance:                                       | T  |
| Sample Diagnosis (from Pathology Verification):   | Adenocarcinoma of colon  |
| Normal:   | 80%  |
| Lesional:   | 10%  |
| Tumor:  | 9%   |
| Tumor Hypo/Acellular Stroma:                      | 0%   |
| Tumor Hypercellular Stroma:                       | 0%   |
| Necrosis:   | 1%   |
| Pathology Verification notes from H&E review:     | lesion: abscess wall; normal: 0% mucosa, 0% submucosa, 100% muscle |
| CASE Diagnosis (from medical center path report): | Adenocarcinoma of colon  |
| Age:  | 86   |
| Gender:   | Male   |
| Tumor Grade:                                      | AJCC G2: Moderately differentiated                                 |

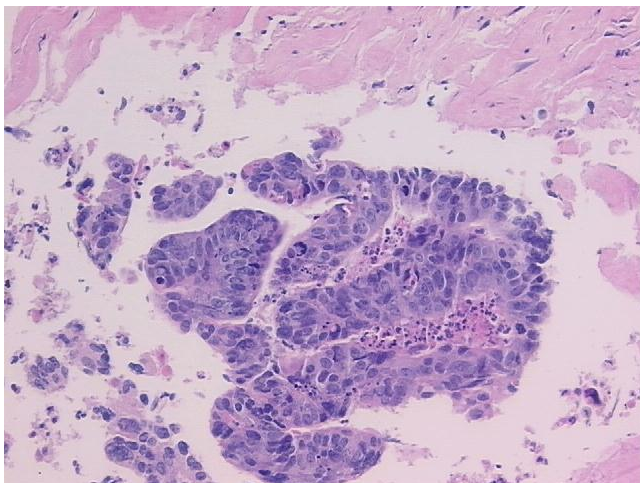


[View online »](#)

|                              |   |
|------------------------------|---|
| Minimum Stage Grouping:      | IIA   |
| T (Extent of Primary Tumor): | T3  |
| N (Lymph node metastasis):   | N0  |
| M (Distant metastasis):      | MX  |
| Storage:                     | Store FFPE tissue sections at +4°C.                                   |
| Stability:                   | All FFPE tissue sections are stable for 1 year from date of purchase. |

**Product images:**

4x Image



20x Image