

## Product datasheet for **CS802878**

### Tissue FFPE Sections, Soft tissue

#### Product data:

Product Type:	FFPE Sections
Disease State:	Cancer
Diagnosis Category:	Sarcoma
Tissue:	Soft tissue
Frozen Sample ID:	PA15478596
Case ID:	CU0000001542
Tissue of Origin:	Soft tissue
Site of Finding:	Thigh
Appearance:	T
Sample Diagnosis (from Pathology Verification):	Histiocytoma, malignant fibrous
Normal:	0%
Lesional:	0%
Tumor:	75%
Tumor Hypo/Acellular Stroma:	15%
Tumor Hypercellular Stroma:	10%
Necrosis:	0%
CASE Diagnosis (from medical center path report):	Histiocytoma, malignant fibrous
Age:	36
Gender:	Female
Tumor Grade:	AJCC G3: Poorly differentiated
Minimum Stage Grouping:	III



[View online »](#)

T (Extent of Primary Tumor): T2b

N (Lymph node metastasis): N0

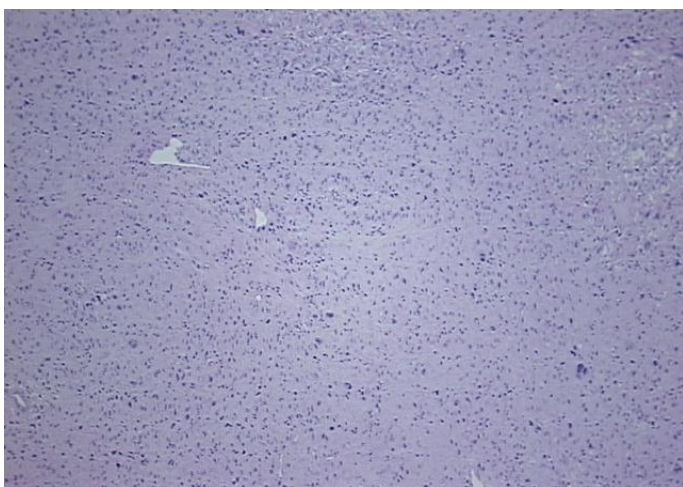
M (Distant metastasis): MX

Diagnostic Test Results: Cytokeratin (Pan) ~ Keratin, Pan ! by IHC,Negative; Smooth muscle actin ~ SMA ~ Alpha-SMA ! by IHC,Negative; Vimentin ~ VIM ! by IHC,Positive; S100 protein,Negative; Desmin ! by IHC,Negative

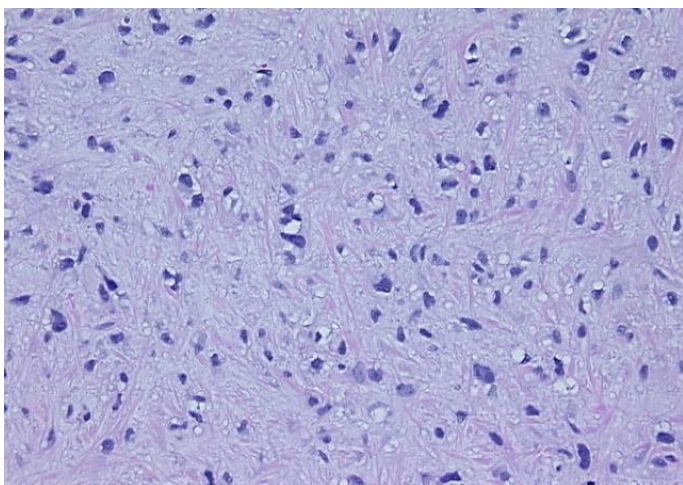
Storage: Store FFPE tissue sections at +4°C.

Stability: All FFPE tissue sections are stable for 1 year from date of purchase.

### Product images:



4x Image



20x Image