

## Product datasheet for CS802845

### Tissue FFPE Sections, Stomach

#### Product data:

Product Type:	FFPE Sections
Disease State:	Normal
Diagnosis Category:	Normal
Tissue:	Stomach
Frozen Sample ID:	PA000021ED
Case ID:	CU0000001533
Tissue of Origin:	Stomach
Site of Finding:	Stomach
Appearance:	R
Sample Diagnosis (from Pathology Verification):	Within normal limits
Normal:	100%
Lesional:	0%
Tumor:	0%
Tumor Hypo/Acellular Stroma:	0%
Tumor Hypercellular Stroma:	0%
Necrosis:	0%
Pathology Verification notes from H&E review:	70% Gastric mucosa, 30% Submucosa and Muscle
CASE Diagnosis (from medical center path report):	Adenocarcinoma of stomach, intestinal type
Age:	76
Gender:	Female
Tumor Grade:	AJCC G3: Poorly differentiated



[View online »](#)

Minimum Stage Grouping: III B

T (Extent of Primary Tumor): T3

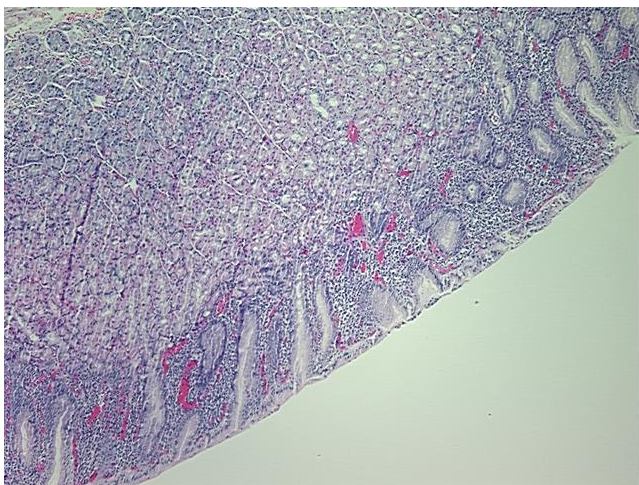
N (Lymph node metastasis): N2

M (Distant metastasis): MX

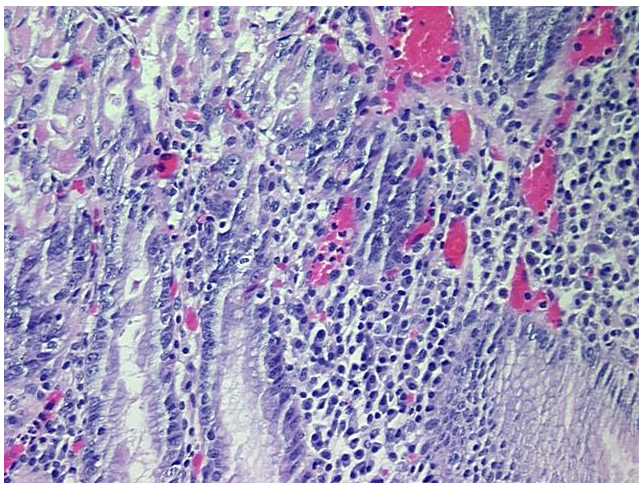
Storage: Store FFPE tissue sections at +4°C.

Stability: All FFPE tissue sections are stable for 1 year from date of purchase.

### Product images:



4x Image



20x Image