

## Product datasheet for **CS802747**

### Tissue FFPE Sections, Lung

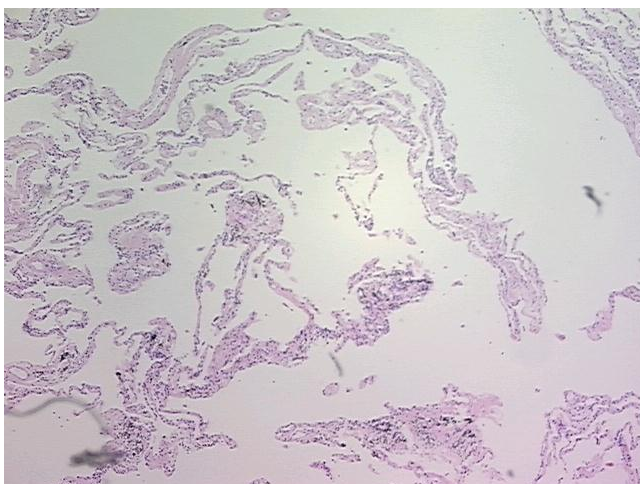
#### Product data:

|   |   |
|---|---|
| Product Type:                                     | FFPE Sections   |
| Disease State:                                    | Other Disease   |
| Diagnosis Category:                               | Chronic Obstructive Pulmonary Disease (COPD)                              |
| Tissue:   | Lung  |
| Frozen Sample ID:                                 | PA15476F48  |
| Case ID:  | CU0000001497  |
| Tissue of Origin:                                 | Lung  |
| Site of Finding:                                  | Lung  |
| Appearance:                                       | L   |
| Sample Diagnosis (from Pathology Verification):   | Emphysema, centrilobular  |
| Normal:   | 40%   |
| Lesional:   | 60%   |
| Tumor:  | 0%  |
| Tumor Hypo/Acellular Stroma:                      | 0%  |
| Tumor Hypercellular Stroma:                       | 0%  |
| Necrosis:   | 0%  |
| Pathology Verification notes from H&E review:     | Non Tumor Structures: 90% Alveoli, 5% Bronchioles, 5% Fibrovascular septa |
| CASE Diagnosis (from medical center path report): | Adenocarcinoma of lung  |
| Age:  | 71  |
| Gender:   | Female  |
| Tumor Grade:                                      | AJCC G2: Moderately differentiated  |

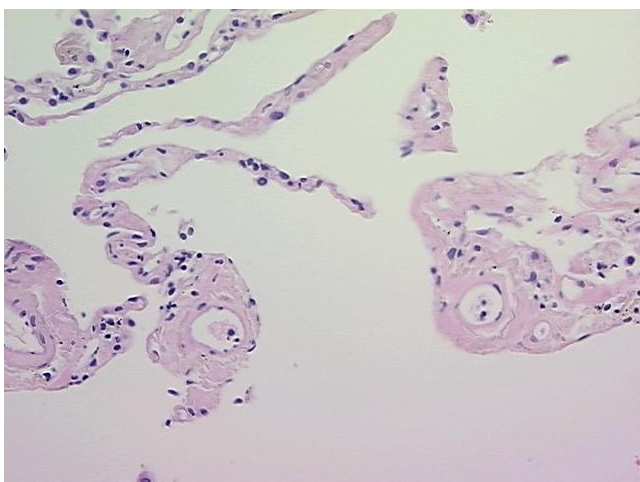


[View online »](#)

|                              |   |
|------------------------------|---|
| Minimum Stage Grouping:      | IA  |
| T (Extent of Primary Tumor): | T1  |
| N (Lymph node metastasis):   | NX  |
| M (Distant metastasis):      | MX  |
| Diagnostic Test Results:     | ERBB1 ~ EGFR ~ Epidermal growth factor receptor ! by IHC,Positive; HER2 ~ ERBB2 ~ Neu ! by IHC,Negative |
| Storage:                     | Store FFPE tissue sections at +4°C.   |
| Stability:                   | All FFPE tissue sections are stable for 1 year from date of purchase.                                   |

**Product images:**

4x Image



20x Image