

## Product datasheet for CS802742

### Tissue FFPE Sections, Ovary: left

#### Product data:

|   |  |
|---|--|
| Product Type:                                     | FFPE Sections  |
| Disease State:                                    | Cancer   |
| Diagnosis Category:                               | Sarcoma  |
| Tissue:   | Ovary  |
| Frozen Sample ID:                                 | PA15476D80   |
| Case ID:  | CU0000001496   |
| Tissue of Origin:                                 | Ovary: left  |
| Site of Finding:                                  | Omentum  |
| Appearance:                                       | T  |
| Sample Diagnosis (from Pathology Verification):   | Carcinosarcoma of ovary, metastatic                  |
| Normal:   | 0%   |
| Lesional:   | 0%   |
| Tumor:  | 80%  |
| Tumor Hypo/Acellular Stroma:                      | 10%  |
| Tumor Hypercellular Stroma:                       | 10%  |
| Necrosis:   | 0%   |
| CASE Diagnosis (from medical center path report): | Carcinosarcoma of ovary                              |
| Age:  | 46   |
| Gender:   | Female   |
| Tumor Grade:                                      | AJCC G3-4: Poorly differentiated or undifferentiated |
| Minimum Stage Grouping:                           | III  |



[View online »](#)

T (Extent of Primary Tumor): T3

N (Lymph node metastasis): NX

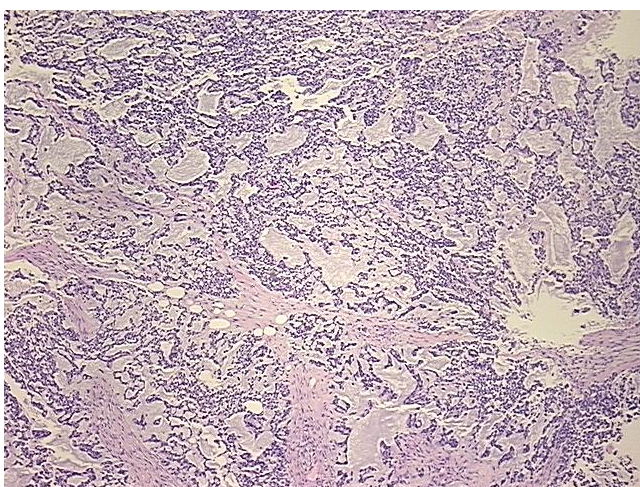
M (Distant metastasis): MX

Diagnostic Test Results: CD227 ~ MUC1 ~ EMA ~ CA15-3 ! by IHC,Positive; CD56 ~ NCAM ~ NKH1 ! by IHC,Positive, focal; Vimentin ~ VIM ! by IHC,Positive; S100 protein,Positive; Epithelial specific antigen ~ BerEP4 ~ MOC31 ! by IHC,Positive; Cytokeratin 7 ~ CK7 ! by

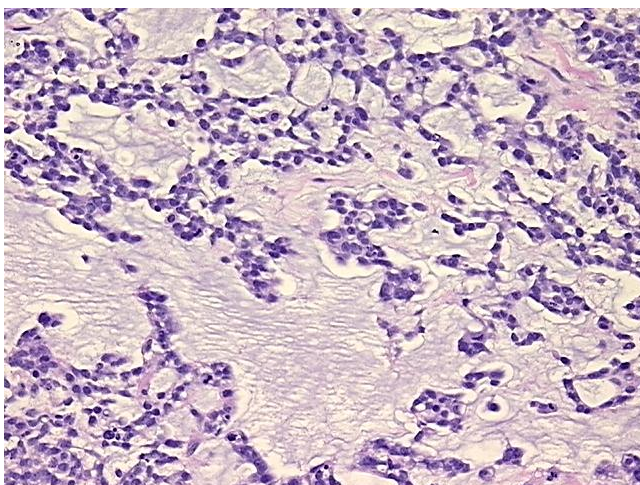
Storage: Store FFPE tissue sections at +4°C.

Stability: All FFPE tissue sections are stable for 1 year from date of purchase.

### Product images:



4x Image



20x Image