

## Product datasheet for **CS802358**

### Tissue FFPE Sections, Endometrium

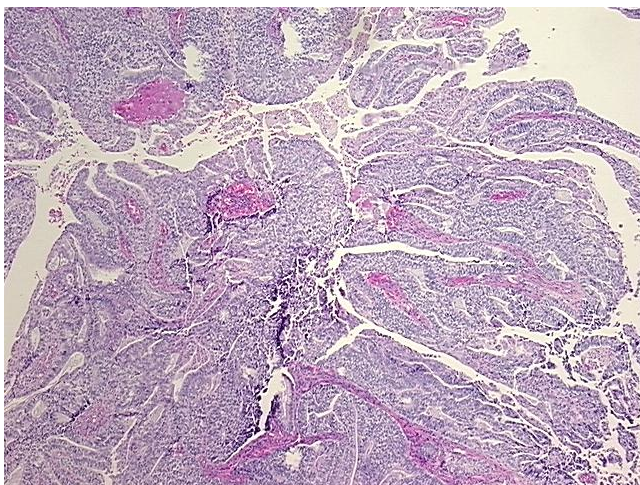
#### Product data:

|   |   |
|---|---|
| Product Type:                                     | FFPE Sections   |
| Disease State:                                    | Cancer  |
| Diagnosis Category:                               | Endometrial Cancer  |
| Tissue:   | Endometrium   |
| Frozen Sample ID:                                 | PA00001EBB  |
| Case ID:  | CU0000001281  |
| Tissue of Origin:                                 | Endometrium   |
| Site of Finding:                                  | Uterus  |
| Appearance:                                       | T   |
| Sample Diagnosis (from Pathology Verification):   | Adenocarcinoma of endometrium, endometrioid                                 |
| Normal:   | 0%  |
| Lesional:   | 0%  |
| Tumor:  | 60%   |
| Tumor Hypo/Acellular Stroma:                      | 20%   |
| Tumor Hypercellular Stroma:                       | 20%   |
| Necrosis:   | 0%  |
| Pathology Verification notes from H&E review:     | Tumor: with extensive mucin component; Tumor Stroma (Hypo/Acellular): Mucin |
| CASE Diagnosis (from medical center path report): | Adenocarcinoma of endometrium, endometrioid                                 |
| Age:  | 81  |
| Gender:   | Female  |
| Tumor Grade:                                      | FIGO G2: Moderately differentiated  |

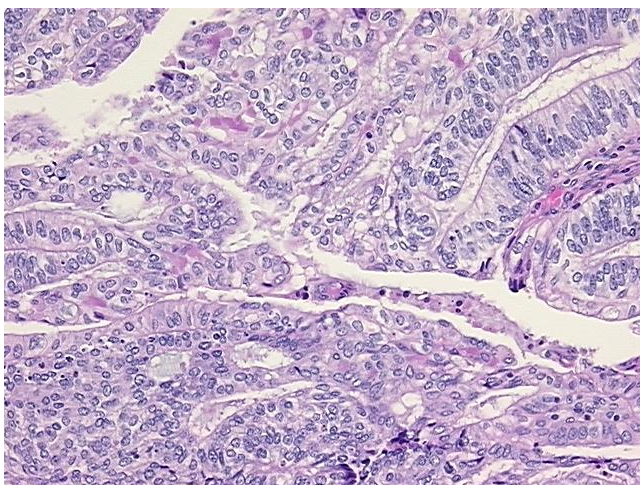


[View online »](#)

|                              |   |
|------------------------------|---|
| Minimum Stage Grouping:      | IIIC  |
| T (Extent of Primary Tumor): | T3a   |
| N (Lymph node metastasis):   | N1  |
| M (Distant metastasis):      | MX  |
| Storage:                     | Store FFPE tissue sections at +4°C.                                   |
| Stability:                   | All FFPE tissue sections are stable for 1 year from date of purchase. |

**Product images:**

4x Image



20x Image