

## Product datasheet for **CS802285**

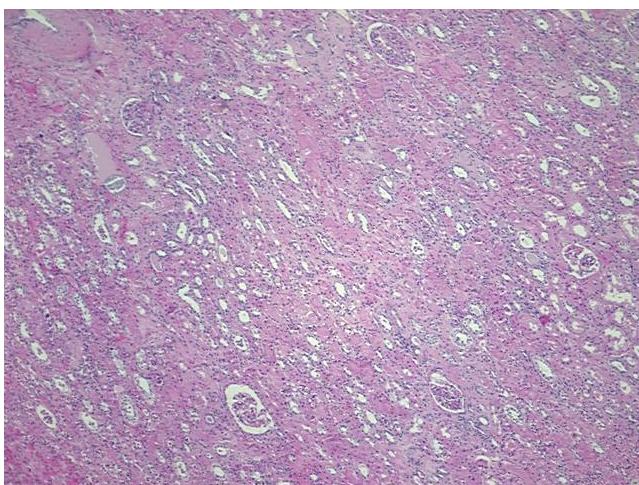
### Tissue FFPE Sections, Kidney

#### Product data:

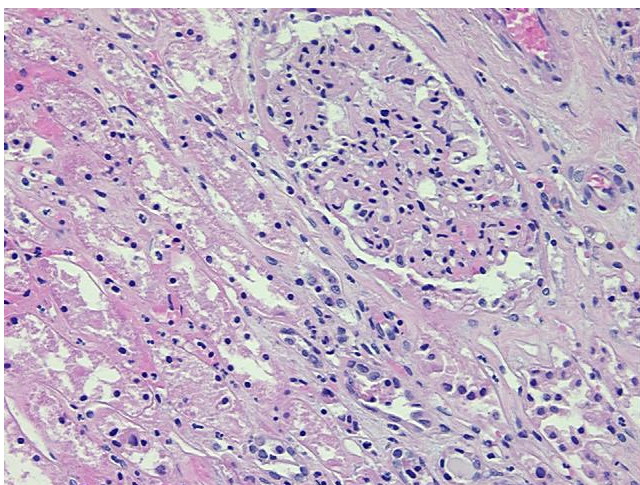
Product Type:	FFPE Sections
Disease State:	Other Disease
Diagnosis Category:	Ischemic Changes
Tissue:	Kidney
Frozen Sample ID:	PA000023F8
Case ID:	CU00000001240
Tissue of Origin:	Kidney
Site of Finding:	Kidney
Appearance:	L
Sample Diagnosis (from Pathology Verification):	Ischemic changes of kidney
Normal:	80%
Lesional:	20%
Tumor:	0%
Tumor Hypo/Acellular Stroma:	0%
Tumor Hypercellular Stroma:	0%
Necrosis:	0%
Pathology Verification notes from H&E review:	100% Cortex, 20% of which with ischemic changes
CASE Diagnosis (from medical center path report):	Carcinoma of kidney, renal cell, sarcomatoid
Age:	71
Gender:	Male
Tumor Grade:	Fuhrman G4: Nuclei bizarre and multilobated


[View online »](#)

Minimum Stage Grouping:	II
T (Extent of Primary Tumor):	T2
N (Lymph node metastasis):	NX
M (Distant metastasis):	MX
Diagnostic Test Results:	CD227 ~ MUC1 ~ EMA ~ CA15-3 ! by IHC,Negative; Cytokeratin 7 ~ CK7 ! by IHC,Negative; Cytokeratin 20 ~ CK20 ! by IHC,Negative; CD10 ~ CALLA ~ Common ALL antigen ! by IHC,Positive
Storage:	Store FFPE tissue sections at +4°C.
Stability:	All FFPE tissue sections are stable for 1 year from date of purchase.

**Product images:**


4x Image



20x Image