

## Product datasheet for **CS802070**

### Tissue FFPE Sections, Artery: peripheral

#### Product data:

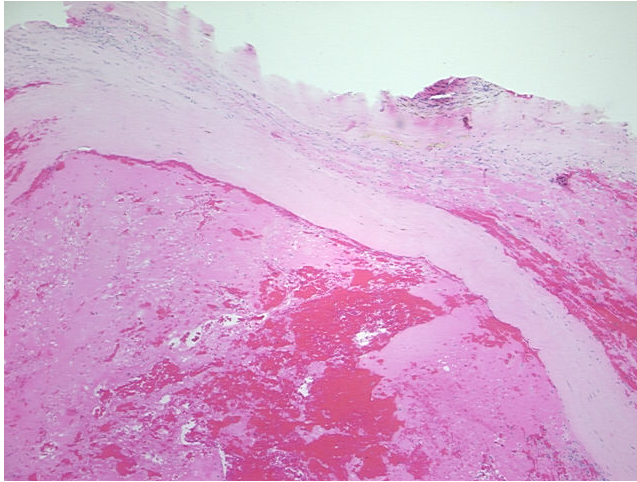
Product Type:	FFPE Sections
Disease State:	Other Disease
Diagnosis Category:	Thrombus
Tissue:	Artery
Frozen Sample ID:	PA00000C68
Case ID:	CU0000001133
Tissue of Origin:	Artery: peripheral
Site of Finding:	Artery: peripheral
Appearance:	L
Sample Diagnosis (from Pathology Verification):	Thrombus of artery
Normal:	0%
Lesional:	100%
Tumor:	0%
Tumor Hypo/Acellular Stroma:	0%
Tumor Hypercellular Stroma:	0%
Necrosis:	0%
Pathology Verification notes from H&E review:	20% arterial wall, 10% skeletal muscle, 70% organized thrombus
CASE Diagnosis (from medical center path report):	Atherosclerosis
Age:	87
Gender:	Male
Storage:	Store FFPE tissue sections at +4°C.



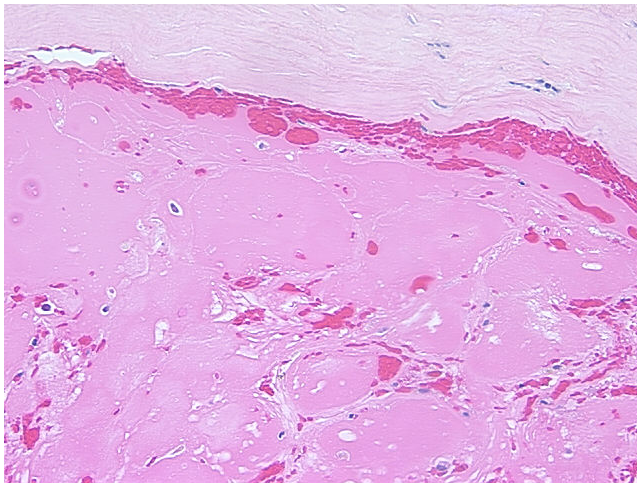
[View online »](#)

Stability: All FFPE tissue sections are stable for 1 year from date of purchase.

**Product images:**



4x Image



20x Image