

Product datasheet for **CS801993**

Tissue FFPE Sections, Nose

Product data:

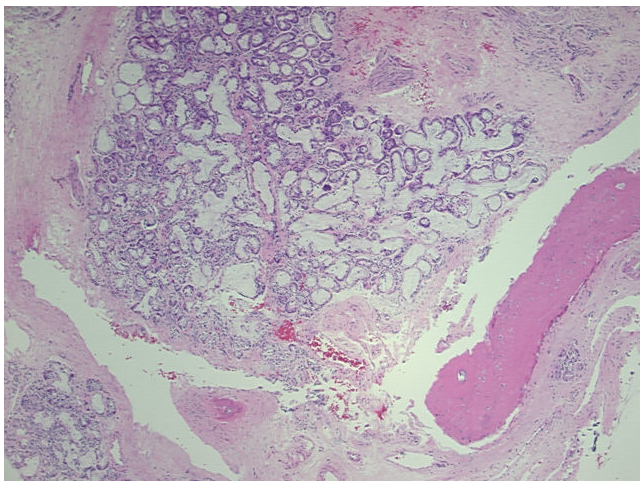
Product Type:	FFPE Sections
Disease State:	Other Disease
Diagnosis Category:	Sinusitis
Tissue:	Nose
Frozen Sample ID:	PA00000BE1
Case ID:	CU0000001103
Tissue of Origin:	Nose
Site of Finding:	Nose
Appearance:	L
Sample Diagnosis (from Pathology Verification):	Sinusitis, chronic
Normal:	0%
Lesional:	100%
Tumor:	0%
Tumor Hypo/Acellular Stroma:	0%
Tumor Hypercellular Stroma:	0%
Necrosis:	0%
Pathology Verification notes from H&E review:	60% Mucous glands; 35% Fibrous stroma; 5% Bone; Chronic inflammation
CASE Diagnosis (from medical center path report):	Sinusitis, chronic
Age:	46
Gender:	Female
Storage:	Store FFPE tissue sections at +4°C.



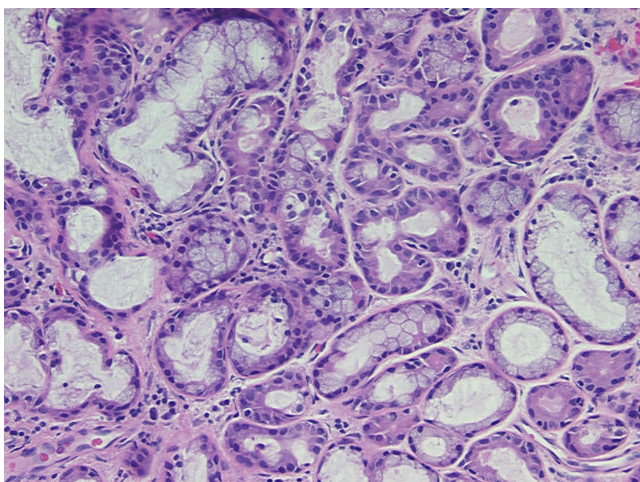
[View online »](#)

Stability: All FFPE tissue sections are stable for 1 year from date of purchase.

Product images:



4x Image



20x Image