

## Product datasheet for **CS801966**

### Tissue FFPE Sections, Colon: transverse

#### Product data:

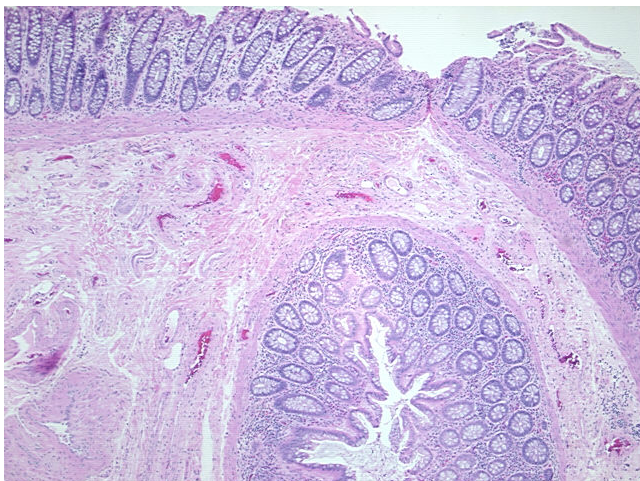
Product Type:	FFPE Sections
Disease State:	Other Disease
Diagnosis Category:	Diverticulitis
Tissue:	Colon
Frozen Sample ID:	PA00000BC5
Case ID:	CU0000001100
Tissue of Origin:	Colon: transverse
Site of Finding:	Colon: transverse
Appearance:	L
Sample Diagnosis (from Pathology Verification):	Diverticulitis of colon
Normal:	50%
Lesional:	50%
Tumor:	0%
Tumor Hypo/Acellular Stroma:	0%
Tumor Hypercellular Stroma:	0%
Necrosis:	0%
Pathology Verification notes from H&E review:	40% mucosa, 60% submucosa and muscle; contains 50% diverticulitis
CASE Diagnosis (from medical center path report):	Diverticulitis of colon
Age:	81
Gender:	Female
Storage:	Store FFPE tissue sections at +4°C.



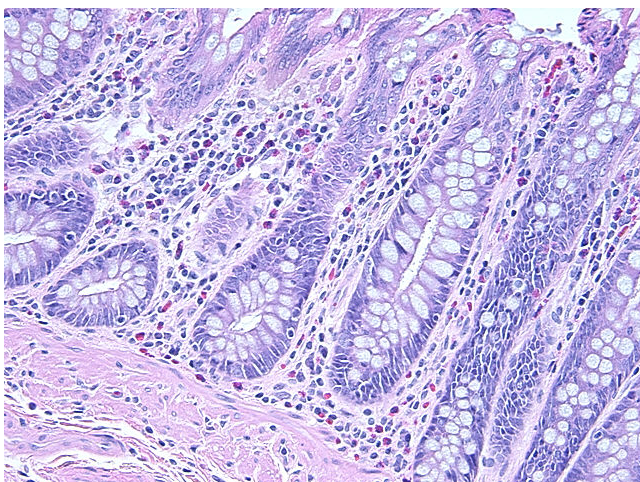
[View online »](#)

Stability: All FFPE tissue sections are stable for 1 year from date of purchase.

**Product images:**



4x Image



20x Image