

Product datasheet for **CS801878**

Tissue FFPE Sections, Myometrium

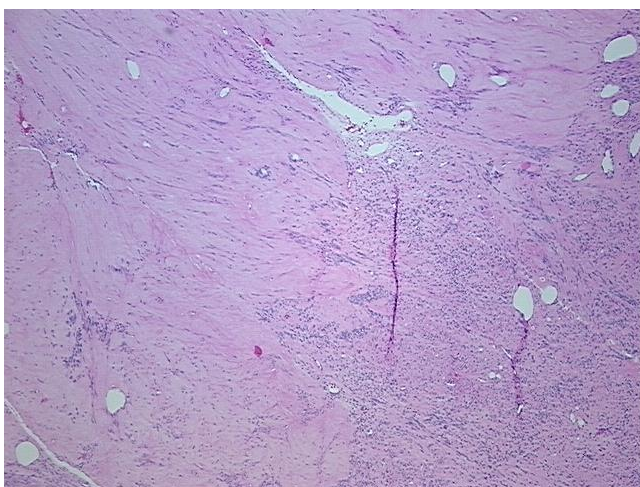
Product data:

Product Type:	FFPE Sections
Disease State:	Other Disease
Diagnosis Category:	Uterine Fibroids
Tissue:	Myometrium
Frozen Sample ID:	PA00000B61
Case ID:	CU0000001075
Tissue of Origin:	Myometrium
Site of Finding:	Myometrium
Appearance:	L
Sample Diagnosis (from Pathology Verification):	Leiomyoma of myometrium
Normal:	30%
Lesional:	70%
Tumor:	0%
Tumor Hypo/Acellular Stroma:	0%
Tumor Hypercellular Stroma:	0%
Necrosis:	0%
Pathology Verification notes from H&E review:	Hyalinized leiomyoma
CASE Diagnosis (from medical center path report):	Sarcoma
Age:	89
Gender:	Female
Tumor Grade:	AJCC G3-4: Poorly differentiated or undifferentiated

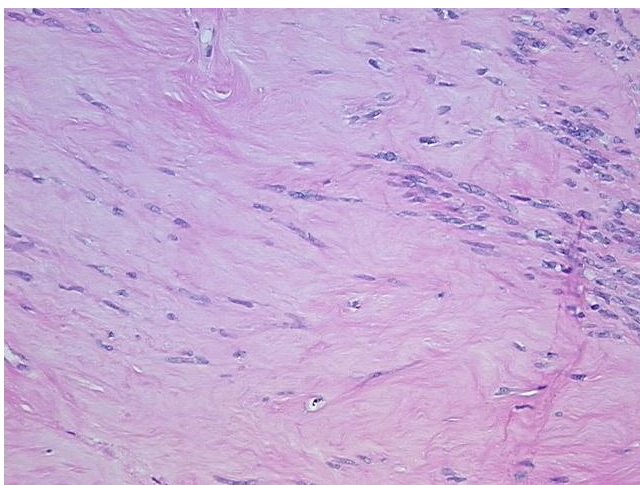


[View online »](#)

Minimum Stage Grouping:	III
T (Extent of Primary Tumor):	T2b
N (Lymph node metastasis):	NX
M (Distant metastasis):	MX
Diagnostic Test Results:	Estrogen receptor ~ ER ! by IHC,Negative
Storage:	Store FFPE tissue sections at +4°C.
Stability:	All FFPE tissue sections are stable for 1 year from date of purchase.

Product images:

4x Image



20x Image