

## Product datasheet for **CS801836**

### Tissue FFPE Sections, Intervertebral disc

#### Product data:

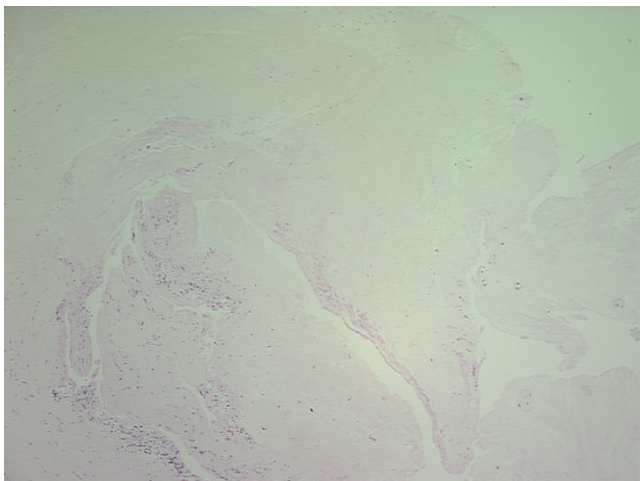
Product Type:	FFPE Sections
Disease State:	Other Disease
Diagnosis Category:	Herniated Disc
Tissue:	Intervertebral disc
Frozen Sample ID:	PA00000B27
Case ID:	CU0000001060
Tissue of Origin:	Intervertebral disc
Site of Finding:	Intervertebral disc
Appearance:	L
Sample Diagnosis (from Pathology Verification):	Herniated disc
Normal:	0%
Lesional:	100%
Tumor:	0%
Tumor Hypo/Acellular Stroma:	0%
Tumor Hypercellular Stroma:	0%
Necrosis:	0%
Pathology Verification notes from H&E review:	Intervertebral disc with degenerative changes
CASE Diagnosis (from medical center path report):	Herniated disc
Age:	36
Gender:	Male
Storage:	Store FFPE tissue sections at +4°C.



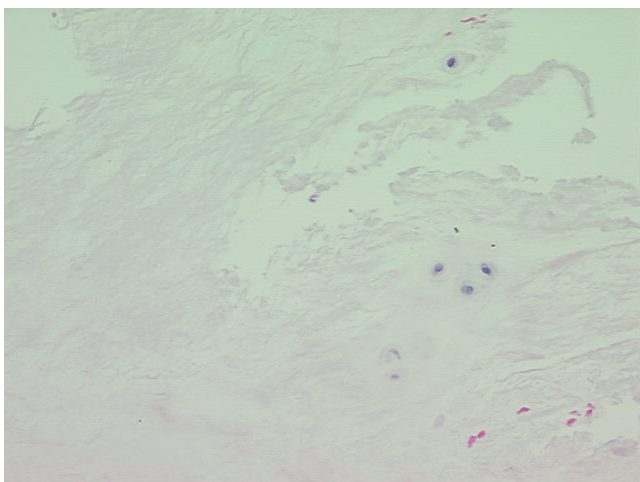
[View online »](#)

Stability: All FFPE tissue sections are stable for 1 year from date of purchase.

**Product images:**



4x Image



20x Image