

Product datasheet for **CS801737**

Tissue FFPE Sections, Larynx

Product data:

| | |
|---|--|
| Product Type: | FFPE Sections |
| Disease State: | Cancer |
| Diagnosis Category: | Head and Neck Cancer |
| Tissue: | Larynx |
| Frozen Sample ID: | PA000009F8 |
| Case ID: | CU0000001016 |
| Tissue of Origin: | Larynx |
| Site of Finding: | Larynx |
| Appearance: | Tumor |
| Sample Diagnosis (from Pathology Verification): | Carcinoma of vocal cord, squamous cell |
| Normal: | 80% |
| Lesional: | 0% |
| Tumor: | 15% |
| Tumor Hypo/Acellular Stroma: | 0% |
| Tumor Hypercellular Stroma: | 5% |
| Necrosis: | 0% |
| CASE Diagnosis (from medical center path report): | Carcinoma of larynx, squamous cell |
| Age: | 81 |
| Gender: | Male |
| Tumor Grade: | AJCC G2: Moderately differentiated |
| Minimum Stage Grouping: | IVA |



[View online »](#)

T (Extent of Primary Tumor): pT4a

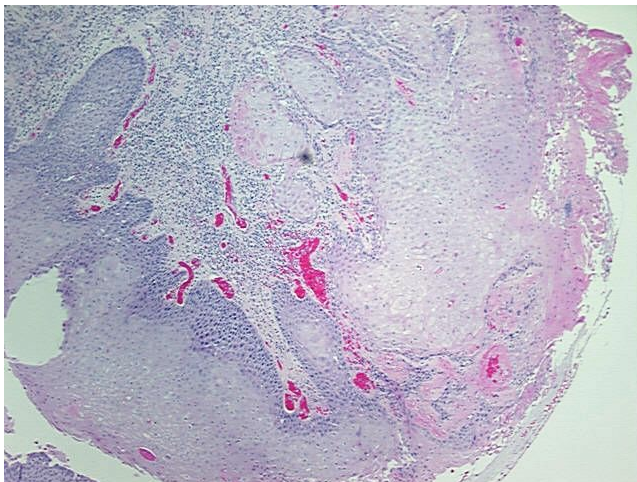
N (Lymph node metastasis): pN0

M (Distant metastasis): pMX

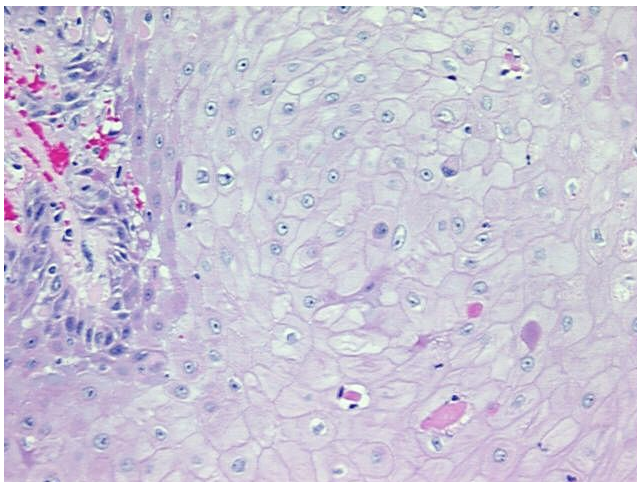
Storage: Store FFPE tissue sections at +4°C.

Stability: All FFPE tissue sections are stable for 1 year from date of purchase.

Product images:



4x Image



20x Image