

## Product datasheet for CS801670

### Tissue FFPE Sections, Omentum

#### Product data:

|   |   |
|---|---|
| Product Type:                                     | FFPE Sections                             |
| Disease State:                                    | Cancer                                    |
| Diagnosis Category:                               | Ovarian Cancer                            |
| Tissue:   | Ovary                                     |
| Frozen Sample ID:                                 | PA00002018                                |
| Case ID:  | CU0000000990                              |
| Tissue of Origin:                                 | Omentum                                   |
| Site of Finding:                                  | Omentum                                   |
| Appearance:                                       | T   |
| Sample Diagnosis (from Pathology Verification):   | Adenocarcinoma of ovary, papillary serous |
| Normal:   | 0%  |
| Lesional:   | 0%  |
| Tumor:  | 45%                                       |
| Tumor Hypo/Acellular Stroma:                      | 0%  |
| Tumor Hypercellular Stroma:                       | 55%                                       |
| Necrosis:   | 0%  |
| CASE Diagnosis (from medical center path report): | Adenocarcinoma of ovary, papillary serous |
| Age:  | 56  |
| Gender:   | Female                                    |
| Tumor Grade:                                      | FIGO G2: Moderately differentiated        |
| Minimum Stage Grouping:                           | III                                       |



[View online »](#)

T (Extent of Primary Tumor): T3

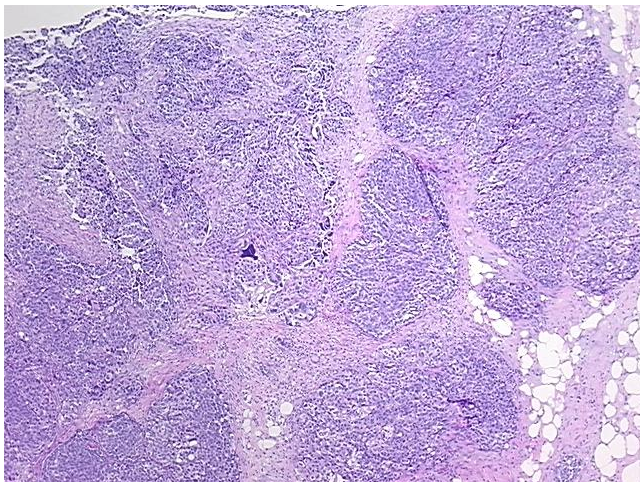
N (Lymph node metastasis): NX

M (Distant metastasis): MX

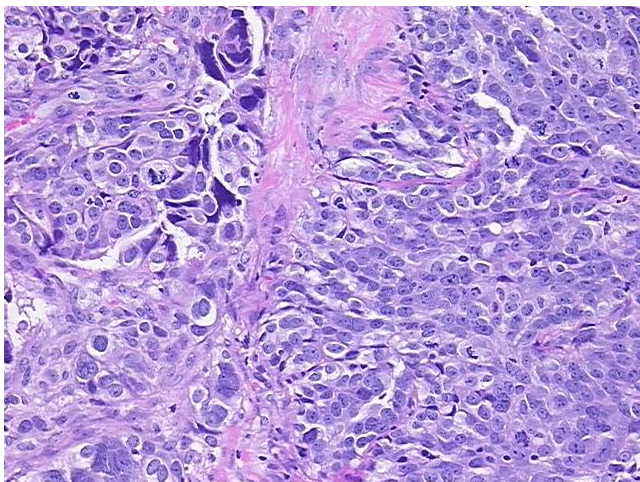
Storage: Store FFPE tissue sections at +4°C.

Stability: All FFPE tissue sections are stable for 1 year from date of purchase.

### Product images:



4x Image



20x Image