

Product datasheet for **CS801616**

Tissue FFPE Sections, Lung

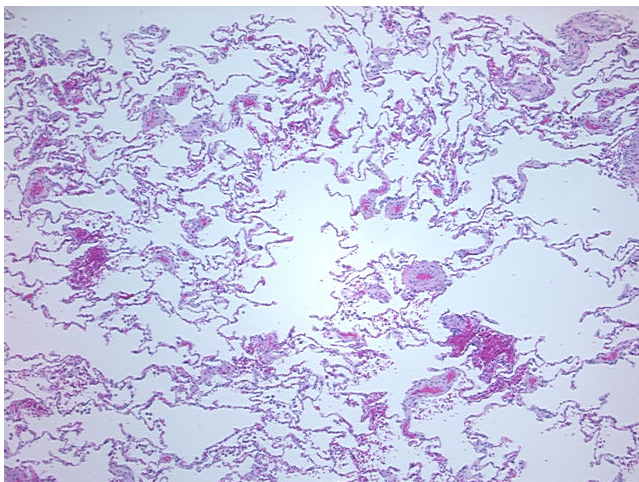
Product data:

Product Type:	FFPE Sections
Disease State:	Other Disease
Diagnosis Category:	Congestion
Tissue:	Lung
Frozen Sample ID:	PA000009BD
Case ID:	CU0000000970
Tissue of Origin:	Lung
Site of Finding:	Lung
Appearance:	L
Sample Diagnosis (from Pathology Verification):	Congestion of lung
Normal:	0%
Lesional:	100%
Tumor:	0%
Tumor Hypo/Acellular Stroma:	0%
Tumor Hypercellular Stroma:	0%
Necrosis:	0%
Pathology Verification notes from H&E review:	95% alveoli, 2% bronchioles, 3% fibrovascular tissue; contains congestion
CASE Diagnosis (from medical center path report):	Malignant melanoma, metastatic
Age:	56
Gender:	Male
Tumor Grade:	Not Reported

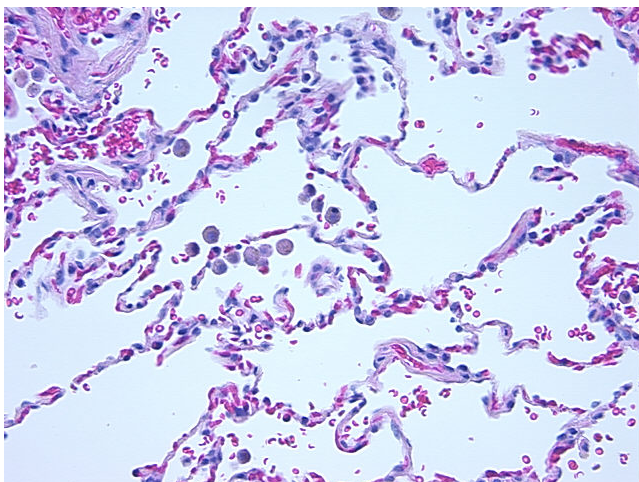


[View online »](#)

Minimum Stage Grouping:	IV
T (Extent of Primary Tumor):	TX
N (Lymph node metastasis):	NX
M (Distant metastasis):	M1b
Diagnostic Test Results:	HMB45 melanoma antigen ~ GP100 ! by IHC,Negative; S100 protein,Positive; Cytokeratin CAM5.2 ~ CAM5.2 ! by IHC,Negative; Cytokeratin AE1/AE3 ~ AE1/AE3 ! by IHC,Negative
Storage:	Store FFPE tissue sections at +4°C.
Stability:	All FFPE tissue sections are stable for 1 year from date of purchase.

Product images:

4x Image



20x Image