

Product datasheet for **CS801550**

Tissue FFPE Sections, Endometriotic tissue

Product data:

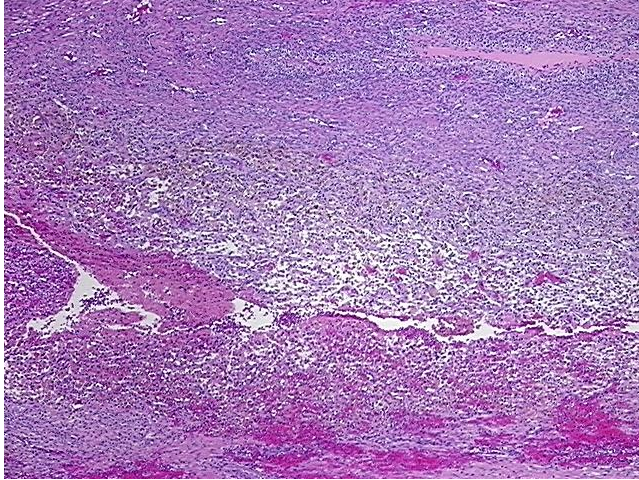
| | |
|---|--|
| Product Type: | FFPE Sections |
| Disease State: | Other Disease |
| Diagnosis Category: | Endometriosis |
| Tissue: | Endometriotic tissue |
| Frozen Sample ID: | PA15476940 |
| Case ID: | CU0000000941 |
| Tissue of Origin: | Endometriotic tissue |
| Site of Finding: | Ovary: left |
| Appearance: | L |
| Sample Diagnosis (from Pathology Verification): | Endometriosis |
| Normal: | 55% |
| Lesional: | 45% |
| Tumor: | 0% |
| Tumor Hypo/Acellular Stroma: | 0% |
| Tumor Hypercellular Stroma: | 0% |
| Necrosis: | 0% |
| Pathology Verification notes from H&E review: | 45% probable endometriosis containing 0% epithelium, 45% hemosiderin containing stromal macrophages; 55% normal ovary containing 20% ovarian stroma, 35% hilar vessels |
| CASE Diagnosis (from medical center path report): | Endometriosis |
| Age: | 46 |
| Gender: | Female |
| Storage: | Store FFPE tissue sections at +4°C. |



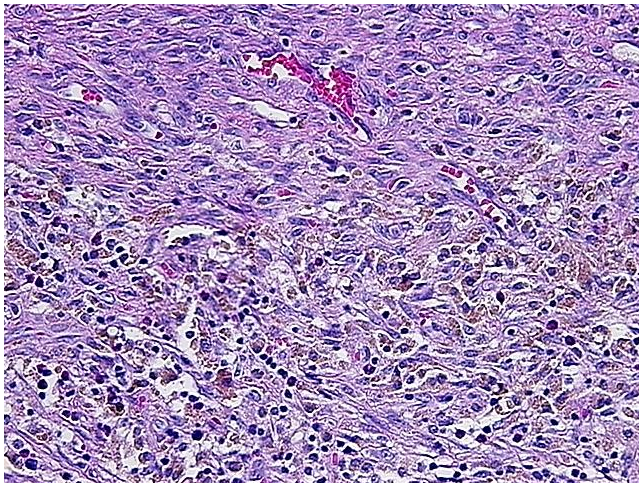
[View online »](#)

Stability: All FFPE tissue sections are stable for 1 year from date of purchase.

Product images:



4x Image



20x Image