

## Product datasheet for **CS801548**

### Tissue FFPE Sections, Endometriotic tissue

#### Product data:

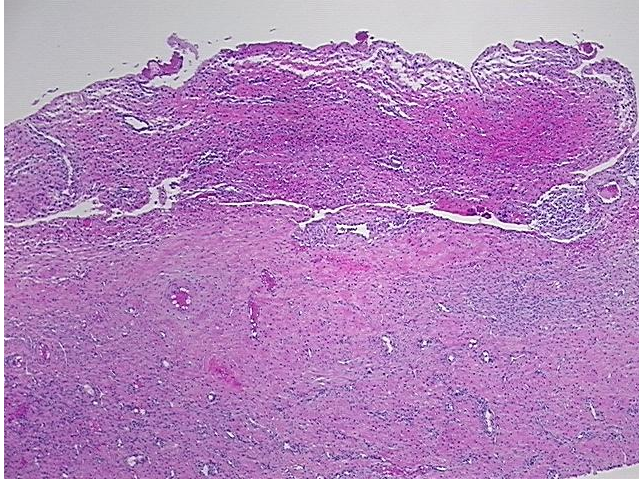
Product Type:	FFPE Sections
Disease State:	Other Disease
Diagnosis Category:	Endometriosis
Tissue:	Endometriotic tissue
Frozen Sample ID:	PA1547693E
Case ID:	CU0000000941
Tissue of Origin:	Endometriotic tissue
Site of Finding:	Ovary: left
Appearance:	L
Sample Diagnosis (from Pathology Verification):	Endometriosis
Normal:	75%
Lesional:	25%
Tumor:	0%
Tumor Hypo/Acellular Stroma:	0%
Tumor Hypercellular Stroma:	0%
Necrosis:	0%
Pathology Verification notes from H&E review:	endometriosis: 5% epithelium, 20% hemosiderin containing stroma; normal ovary: 35% ovarian stroma, 40% hilar vessels
CASE Diagnosis (from medical center path report):	Endometriosis
Age:	46
Gender:	Female
Storage:	Store FFPE tissue sections at +4°C.



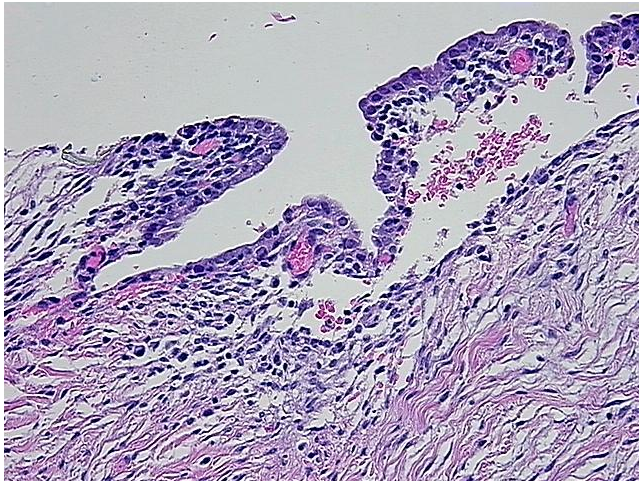
[View online »](#)

Stability: All FFPE tissue sections are stable for 1 year from date of purchase.

**Product images:**



4x Image



20x Image