

## Product datasheet for **CS801524**

### Tissue FFPE Sections, Lung

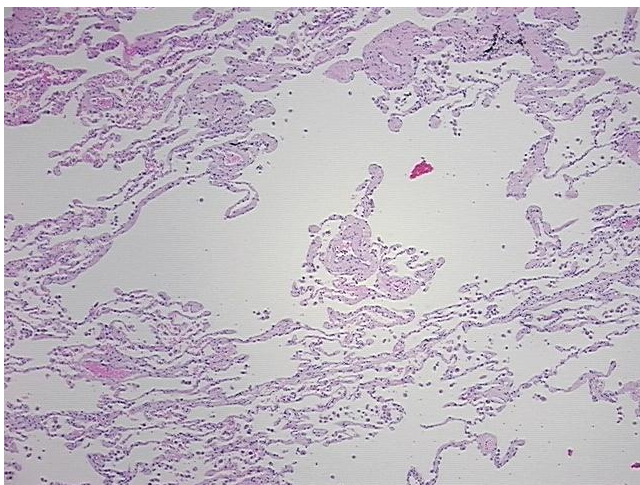
#### Product data:

|   |  |
|---|--|
| Product Type:                                     | FFPE Sections  |
| Disease State:                                    | Other Disease  |
| Diagnosis Category:                               | Chronic Obstructive Pulmonary Disease (COPD)                           |
| Tissue:   | Lung   |
| Frozen Sample ID:                                 | PA15476934   |
| Case ID:  | CU0000000933   |
| Tissue of Origin:                                 | Lung   |
| Site of Finding:                                  | Lung   |
| Appearance:                                       | L  |
| Sample Diagnosis (from Pathology Verification):   | Emphysematous changes  |
| Normal:   | 0%   |
| Lesional:   | 100%   |
| Tumor:  | 0%   |
| Tumor Hypo/Acellular Stroma:                      | 0%   |
| Tumor Hypercellular Stroma:                       | 0%   |
| Necrosis:   | 0%   |
| Pathology Verification notes from H&E review:     | 90% alveoli, 5% bronchi, 5% fibrovascular septa; 2+ IAM, 1+ LY, 0+ PMN |
| CASE Diagnosis (from medical center path report): | Carcinoma of lung, squamous cell                                       |
| Age:  | 76   |
| Gender:   | Male   |
| Tumor Grade:                                      | AJCC G3: Poorly differentiated   |

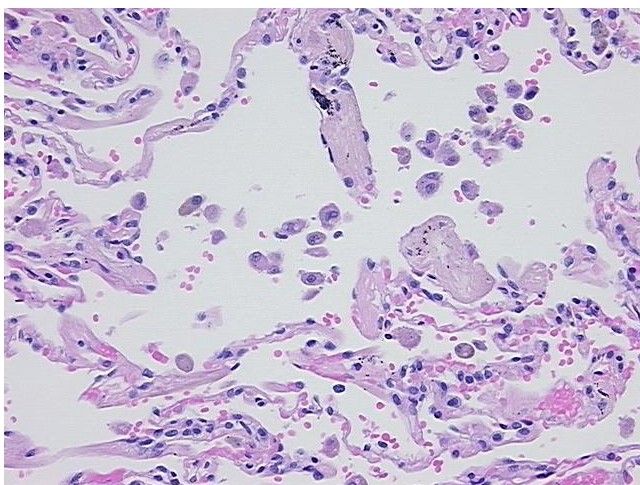


[View online »](#)

|                              |   |
|------------------------------|---|
| Minimum Stage Grouping:      | IIA   |
| T (Extent of Primary Tumor): | T1  |
| N (Lymph node metastasis):   | N1  |
| M (Distant metastasis):      | MX  |
| Storage:                     | Store FFPE tissue sections at +4°C.                                   |
| Stability:                   | All FFPE tissue sections are stable for 1 year from date of purchase. |

**Product images:**

4x Image



20x Image