

Product datasheet for CS801463

Tissue FFPE Sections, Meninges

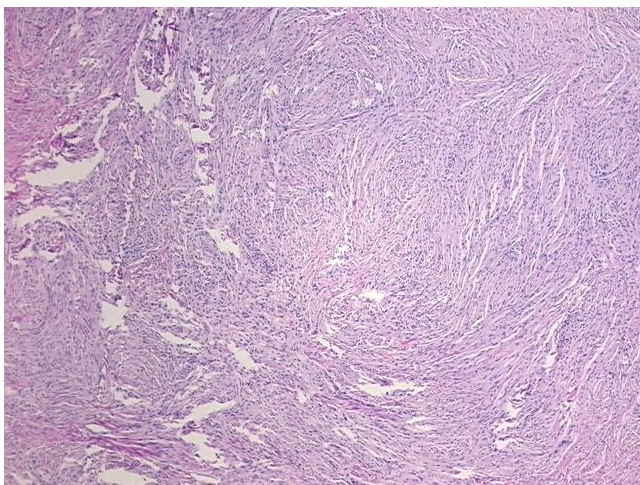
Product data:

| | |
|---|--|
| Product Type: | FFPE Sections |
| Disease State: | Other Disease |
| Diagnosis Category: | Meningioma |
| Tissue: | Brain |
| Frozen Sample ID: | PA00001FDA |
| Case ID: | CU0000000902 |
| Tissue of Origin: | Meninges |
| Site of Finding: | Meninges |
| Appearance: | T |
| Sample Diagnosis (from Pathology Verification): | Meningioma, fibroblastic |
| Normal: | 0% |
| Lesional: | 0% |
| Tumor: | 90% |
| Tumor Hypo/Acellular Stroma: | 0% |
| Tumor Hypercellular Stroma: | 10% |
| Necrosis: | 0% |
| Pathology Verification notes from H&E review: | cellular tumor stroma: 100% mixed lymphocytes and plasma cells |
| CASE Diagnosis (from medical center path report): | Meningioma, fibroblastic |
| Age: | 56 |
| Gender: | Female |
| Tumor Grade: | WHO Grade I |

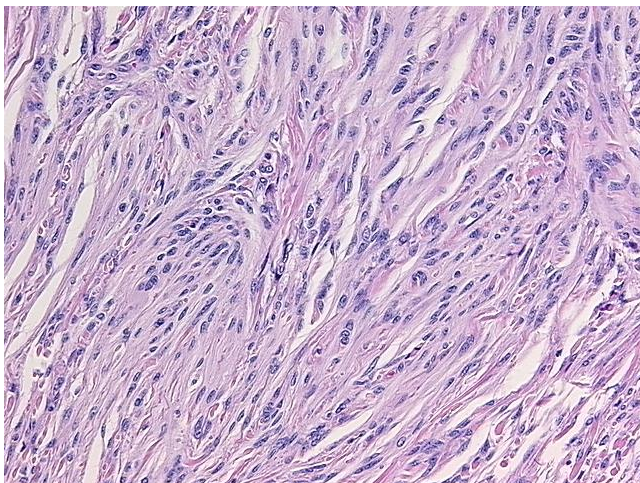


[View online »](#)

| | |
|------------------------------|---|
| Minimum Stage Grouping: | Not Reported |
| T (Extent of Primary Tumor): | Not Reported |
| N (Lymph node metastasis): | Not Reported |
| M (Distant metastasis): | Not Reported |
| Storage: | Store FFPE tissue sections at +4°C. |
| Stability: | All FFPE tissue sections are stable for 1 year from date of purchase. |

Product images:

4x Image



20x Image