

Product datasheet for CS801296

Tissue FFPE Sections, Colon

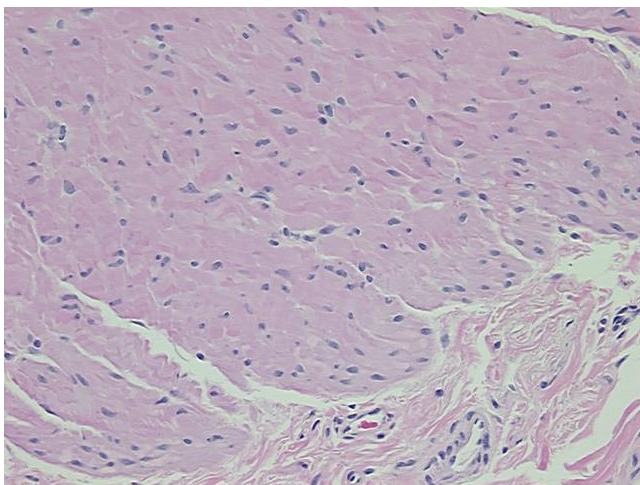
Product data:

Product Type:	FFPE Sections
Disease State:	Normal
Diagnosis Category:	Normal
Tissue:	Colon
Frozen Sample ID:	PA000005EA
Case ID:	CU0000000832
Tissue of Origin:	Colon
Site of Finding:	Colon
Appearance:	R
Sample Diagnosis (from Pathology Verification):	Within normal limits
Normal:	100%
Lesional:	0%
Tumor:	0%
Tumor Hypo/Acellular Stroma:	0%
Tumor Hypercellular Stroma:	0%
Necrosis:	0%
Pathology Verification notes from H&E review:	100% Submucosa and Muscle
CASE Diagnosis (from medical center path report):	Adenocarcinoma of colon
Age:	71
Gender:	Female
Tumor Grade:	AJCC G3: Poorly differentiated



[View online »](#)

Minimum Stage Grouping:	III
T (Extent of Primary Tumor):	T3
N (Lymph node metastasis):	N2
M (Distant metastasis):	MX
Storage:	Store FFPE tissue sections at +4°C.
Stability:	All FFPE tissue sections are stable for 1 year from date of purchase.

Product images:

20x Image