

## Product datasheet for CS801292

### Tissue FFPE Sections, Breast

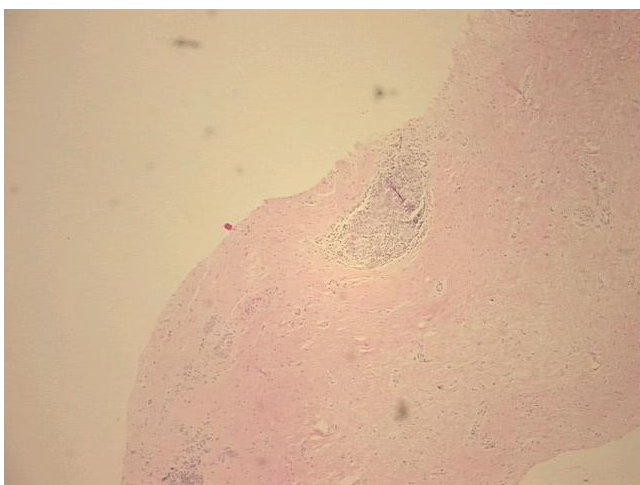
#### Product data:

Product Type:	FFPE Sections
Disease State:	Other Disease
Diagnosis Category:	Inflammation (various)
Tissue:	Breast
Frozen Sample ID:	PA000005DD
Case ID:	CU0000000829
Tissue of Origin:	Breast
Site of Finding:	Breast
Appearance:	L
Sample Diagnosis (from Pathology Verification):	Mastitis, chronic
Normal:	0%
Lesional:	100%
Tumor:	0%
Tumor Hypo/Acellular Stroma:	0%
Tumor Hypercellular Stroma:	0%
Necrosis:	0%
Pathology Verification notes from H&E review:	10% Glandular epithelium, 85% Stroma, 5% Fat; No adenocarcinoma; Contains perilobular chronic inflammation
CASE Diagnosis (from medical center path report):	Carcinoma of breast
Age:	46
Gender:	Female
Tumor Grade:	Nottingham G3: 8-9 points High combined grade (unfavorable)

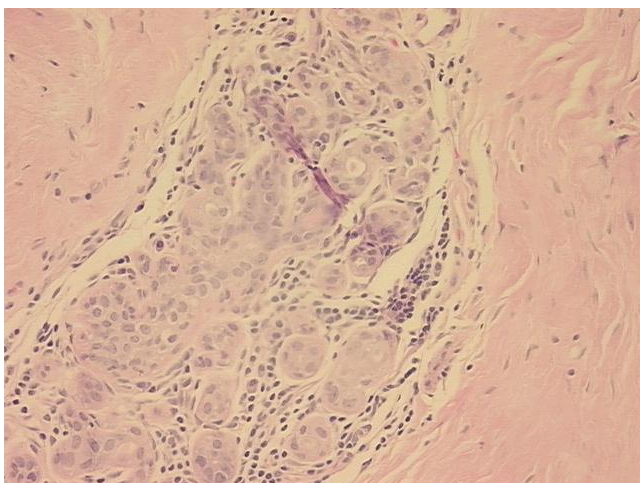


[View online »](#)

Minimum Stage Grouping:	IIA
T (Extent of Primary Tumor):	TX
N (Lymph node metastasis):	N1a
M (Distant metastasis):	MX
Storage:	Store FFPE tissue sections at +4°C.
Stability:	All FFPE tissue sections are stable for 1 year from date of purchase.

**Product images:**

4x Image



20x Image