

Product datasheet for CS801180

Tissue FFPE Sections, Ovary: left

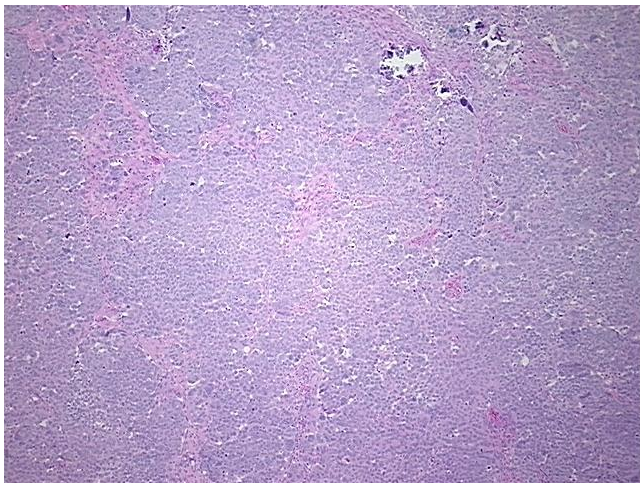
Product data:

| | |
|---|--|
| Product Type: | FFPE Sections |
| Disease State: | Cancer |
| Diagnosis Category: | Ovarian Cancer |
| Tissue: | Ovary |
| Frozen Sample ID: | PA000008FD |
| Case ID: | CU0000000780 |
| Tissue of Origin: | Ovary: left |
| Site of Finding: | Omentum |
| Appearance: | T |
| Sample Diagnosis (from Pathology Verification): | Adenocarcinoma of ovary, serous, metastatic |
| Normal: | 0% |
| Lesional: | 0% |
| Tumor: | 93% |
| Tumor Hypo/Acellular Stroma: | 5% |
| Tumor Hypercellular Stroma: | 0% |
| Necrosis: | 2% |
| Pathology Verification notes from H&E review: | tumor also extended to omentum; Frequent tumor giant cells; Acellular stroma component contains fibrous tissue |
| CASE Diagnosis (from medical center path report): | Adenocarcinoma of ovary, serous |
| Age: | 76 |
| Gender: | Female |
| Tumor Grade: | FIGO G3: Poorly differentiated |

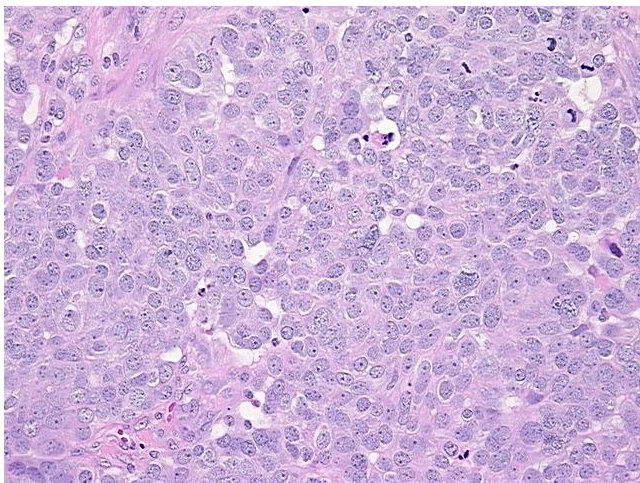


[View online »](#)

| | |
|------------------------------|---|
| Minimum Stage Grouping: | IIIA |
| T (Extent of Primary Tumor): | T3a |
| N (Lymph node metastasis): | NX |
| M (Distant metastasis): | MX |
| Storage: | Store FFPE tissue sections at +4°C. |
| Stability: | All FFPE tissue sections are stable for 1 year from date of purchase. |

Product images:

4x Image



20x Image