

Product datasheet for CS801096

Tissue FFPE Sections, Lung

Product data:

| | |
|---|--|
| Product Type: | FFPE Sections |
| Disease State: | Other Disease |
| Diagnosis Category: | Chronic Obstructive Pulmonary Disease (COPD) |
| Tissue: | Lung |
| Frozen Sample ID: | PA0000086F |
| Case ID: | CU0000000757 |
| Tissue of Origin: | Lung |
| Site of Finding: | Lung |
| Appearance: | L |
| Sample Diagnosis (from Pathology Verification): | Emphysema, centrilobular |
| Normal: | 0% |
| Lesional: | 100% |
| Tumor: | 0% |
| Tumor Hypo/Acellular Stroma: | 0% |
| Tumor Hypercellular Stroma: | 0% |
| Necrosis: | 0% |
| Pathology Verification notes from H&E review: | Emphysema with chronic inflammatory infiltrate; Severely diseased lung with scant alveolar structure |
| CASE Diagnosis (from medical center path report): | Carcinoma in situ of lung, squamous cell |
| Age: | 76 |
| Gender: | Male |
| Tumor Grade: | Not Reported |

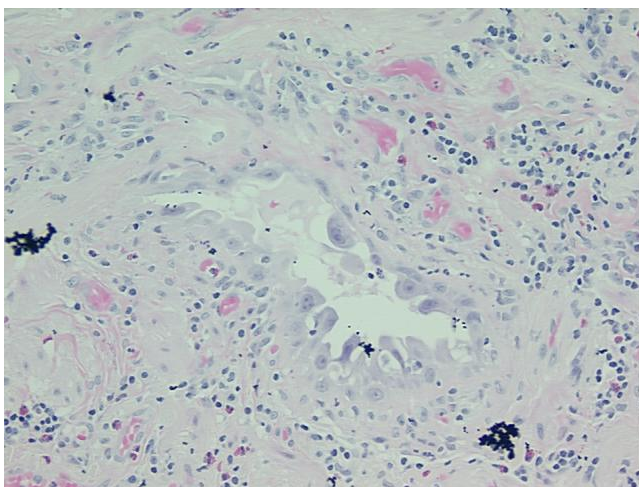


[View online »](#)

| | |
|------------------------------|--|
| T (Extent of Primary Tumor): | Tis |
| N (Lymph node metastasis): | N0 |
| M (Distant metastasis): | MX |
| Diagnostic Test Results: | GMS ~ Grocott methenamine silver stain,Negative; Acid-fast bacteria ~ AFB ~ Ziehl-Neelsen acid fast,Negative |
| Storage: | Store FFPE tissue sections at +4°C. |
| Stability: | All FFPE tissue sections are stable for 1 year from date of purchase. |

Product images:

4x Image



20x Image