

Product datasheet for CS801061

Tissue FFPE Sections, Peripheral nerve

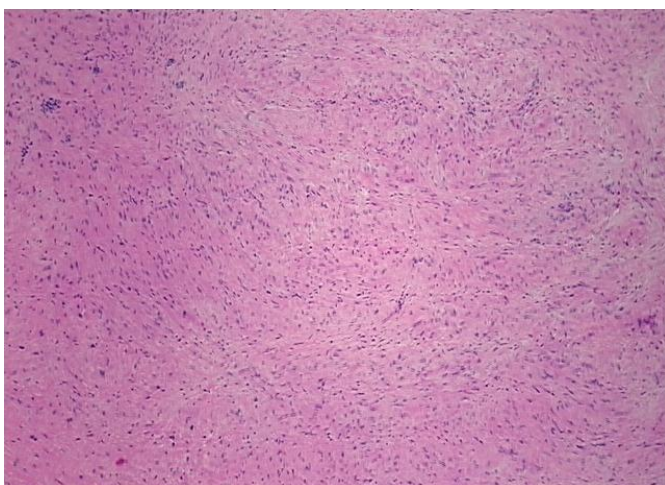
Product data:

Product Type:	FFPE Sections
Disease State:	Other Disease
Diagnosis Category:	Benign Tumors
Tissue:	Nerve
Frozen Sample ID:	PA15476CEC
Case ID:	CU0000000743
Tissue of Origin:	Peripheral nerve
Site of Finding:	Peripheral nerve
Appearance:	T
Sample Diagnosis (from Pathology Verification):	Neurofibroma
Normal:	0%
Lesional:	0%
Tumor:	100%
Tumor Hypo/Acellular Stroma:	0%
Tumor Hypercellular Stroma:	0%
Necrosis:	0%
Pathology Verification notes from H&E review:	20% schwann cells, 80% fibromyxoid stroma
CASE Diagnosis (from medical center path report):	Neurofibroma
Age:	46
Gender:	Female
Tumor Grade:	Not Reported

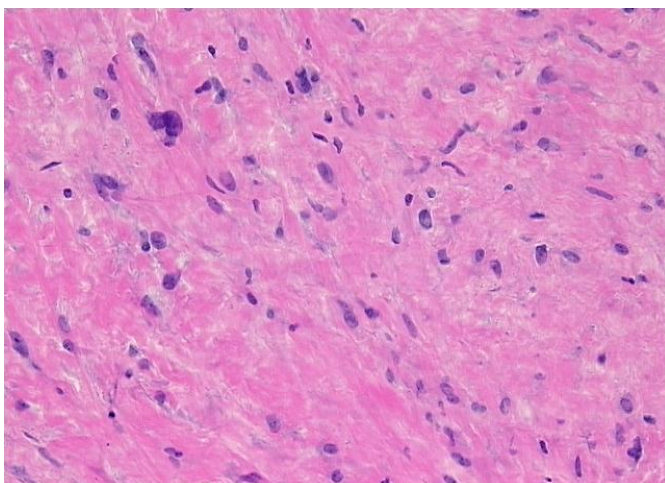


[View online »](#)

Minimum Stage Grouping:	Not Reported
T (Extent of Primary Tumor):	Not Reported
N (Lymph node metastasis):	Not Reported
M (Distant metastasis):	Not Reported
Storage:	Store FFPE tissue sections at +4°C.
Stability:	All FFPE tissue sections are stable for 1 year from date of purchase.

Product images:

4x Image



20x Image