

## Product datasheet for **CS801040**

### Tissue FFPE Sections, Breast

#### Product data:

Product Type:	FFPE Sections
Disease State:	Other Disease
Diagnosis Category:	Breast Microcalcifications
Tissue:	Breast
Frozen Sample ID:	PA00000815
Case ID:	CU0000000733
Tissue of Origin:	Breast
Site of Finding:	Breast
Appearance:	L
Sample Diagnosis (from Pathology Verification):	Microcalcifications of breast
Normal:	0%
Lesional:	100%
Tumor:	0%
Tumor Hypo/Acellular Stroma:	0%
Tumor Hypercellular Stroma:	0%
Necrosis:	0%
Pathology Verification notes from H&E review:	10% Glandular epithelium, 90% Stroma; Microcalcifications present
CASE Diagnosis (from medical center path report):	Carcinoma in situ of breast, ductal, cribriform
Age:	89
Gender:	Female
Tumor Grade:	DCIS: Intermediate grade



[View online »](#)

T (Extent of Primary Tumor): Tis

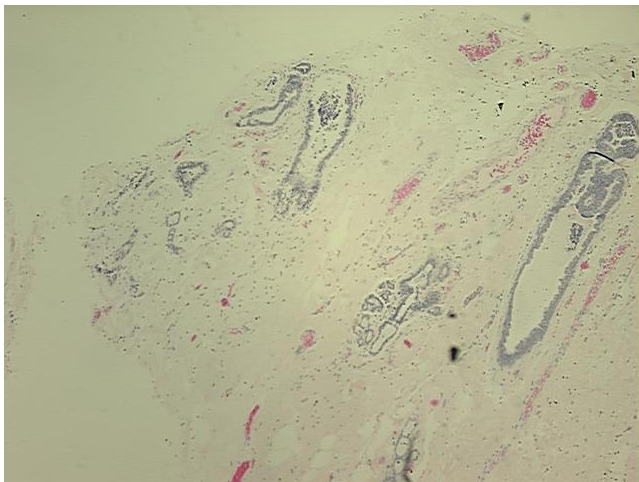
N (Lymph node metastasis): N0

M (Distant metastasis): MX

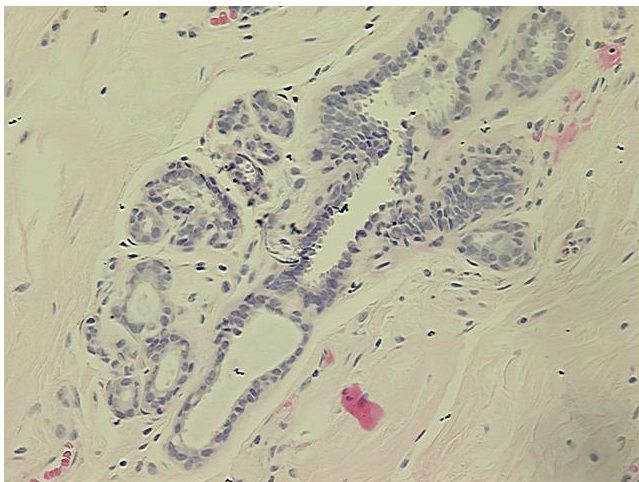
Storage: Store FFPE tissue sections at +4°C.

Stability: All FFPE tissue sections are stable for 1 year from date of purchase.

### Product images:



4x Image



20x Image