

Product datasheet for **CS800964**

Tissue FFPE Sections, Soft tissue

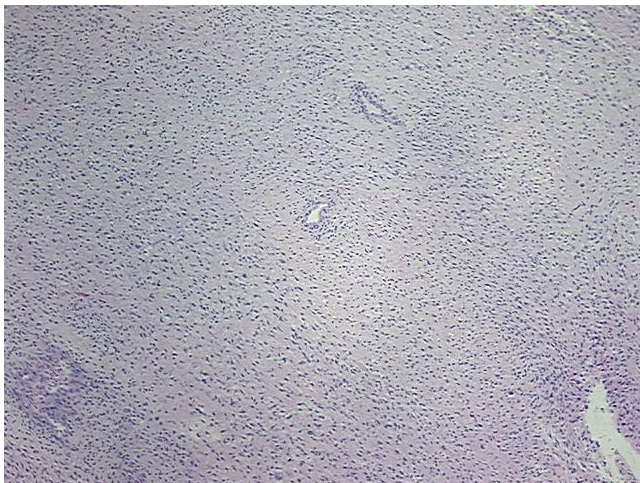
Product data:

Product Type:	FFPE Sections
Disease State:	Cancer
Diagnosis Category:	Sarcoma
Tissue:	Soft tissue
Frozen Sample ID:	PA00002465
Case ID:	CU0000000701
Tissue of Origin:	Soft tissue
Site of Finding:	Retroperitoneal region
Appearance:	T
Sample Diagnosis (from Pathology Verification):	Liposarcoma
Normal:	0%
Lesional:	0%
Tumor:	97%
Tumor Hypo/Acellular Stroma:	0%
Tumor Hypercellular Stroma:	0%
Necrosis:	3%
Pathology Verification notes from H&E review:	Tumor consists of spindle cells with many mitoses; Difficult to separate stroma from tumor
CASE Diagnosis (from medical center path report):	Liposarcoma
Age:	71
Gender:	Male
Tumor Grade:	AJCC G3: Poorly differentiated

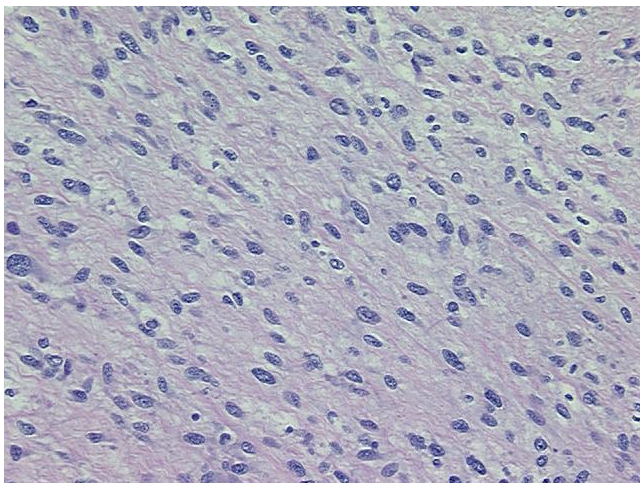


[View online »](#)

Minimum Stage Grouping:	III
T (Extent of Primary Tumor):	T2b
N (Lymph node metastasis):	NX
M (Distant metastasis):	MX
Storage:	Store FFPE tissue sections at +4°C.
Stability:	All FFPE tissue sections are stable for 1 year from date of purchase.

Product images:

4x Image



20x Image