

Product datasheet for CS800905

Tissue FFPE Sections, Liver

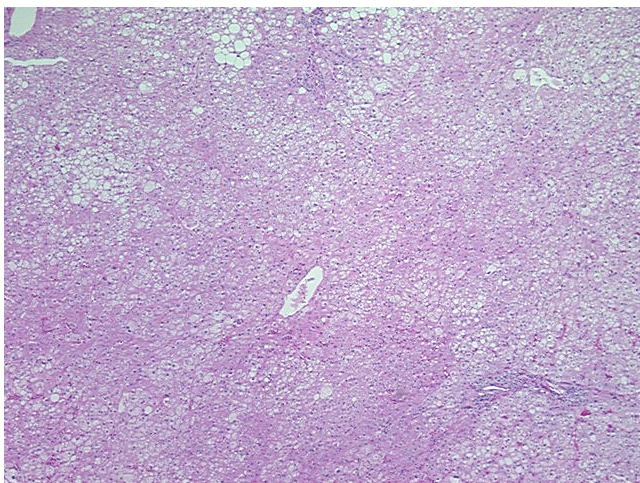
Product data:

| | |
|---|---|
| Product Type: | FFPE Sections |
| Disease State: | Other Disease |
| Diagnosis Category: | Fatty Changes To Liver |
| Tissue: | Liver |
| Frozen Sample ID: | PA15476672 |
| Case ID: | CU0000000672 |
| Tissue of Origin: | Liver |
| Site of Finding: | Liver |
| Appearance: | L |
| Sample Diagnosis (from Pathology Verification): | Fatty changes to liver |
| Normal: | 40% |
| Lesional: | 60% |
| Tumor: | 0% |
| Tumor Hypo/Acellular Stroma: | 0% |
| Tumor Hypercellular Stroma: | 0% |
| Necrosis: | 0% |
| Pathology Verification notes from H&E review: | 95% lobules, 5% triads; moderate to marked steatosis; moderate fibrosis |
| CASE Diagnosis (from medical center path report): | Adenocarcinoma of colon, metastatic |
| Age: | 66 |
| Gender: | Female |
| Tumor Grade: | AJCC G2: Moderately differentiated |

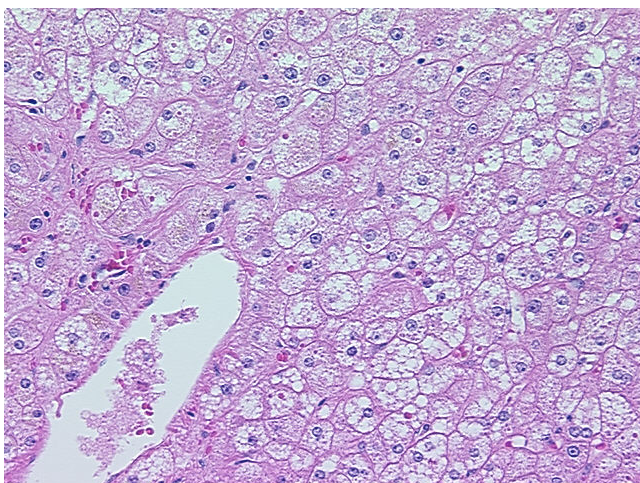


[View online »](#)

| | |
|------------------------------|---|
| Minimum Stage Grouping: | IV |
| T (Extent of Primary Tumor): | TX |
| N (Lymph node metastasis): | NX |
| M (Distant metastasis): | M1 |
| Storage: | Store FFPE tissue sections at +4°C. |
| Stability: | All FFPE tissue sections are stable for 1 year from date of purchase. |

Product images:

4x Image



20x Image