

Product datasheet for CS800850

Tissue FFPE Sections, Urinary bladder

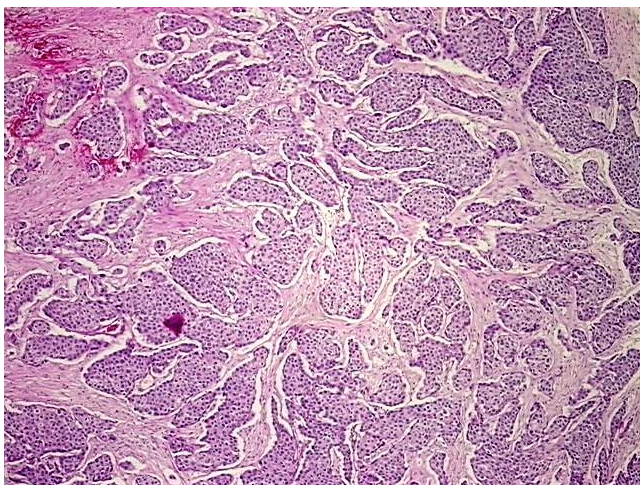
Product data:

| | |
|---|---|
| Product Type: | FFPE Sections |
| Disease State: | Cancer |
| Diagnosis Category: | Bladder Cancer |
| Tissue: | Urinary bladder |
| Frozen Sample ID: | PA000023E9 |
| Case ID: | CU0000000643 |
| Tissue of Origin: | Urinary bladder |
| Site of Finding: | Urinary bladder |
| Appearance: | Tumor |
| Sample Diagnosis (from Pathology Verification): | Carcinoma of bladder, transitional cell |
| Normal: | 0% |
| Lesional: | 0% |
| Tumor: | 70% |
| Tumor Hypo/Acellular Stroma: | 30% |
| Tumor Hypercellular Stroma: | 0% |
| Necrosis: | 0% |
| Pathology Verification notes from H&E review: | Tumor Stroma (Hypo/Acellular): Fibrosis; Other Features/Comments: Tumor area: 6 mm x 5 mm |
| CASE Diagnosis (from medical center path report): | Carcinoma of bladder, transitional cell |
| Age: | 65 |
| Gender: | Male |
| Tumor Grade: | AJCC G3: Poorly differentiated |

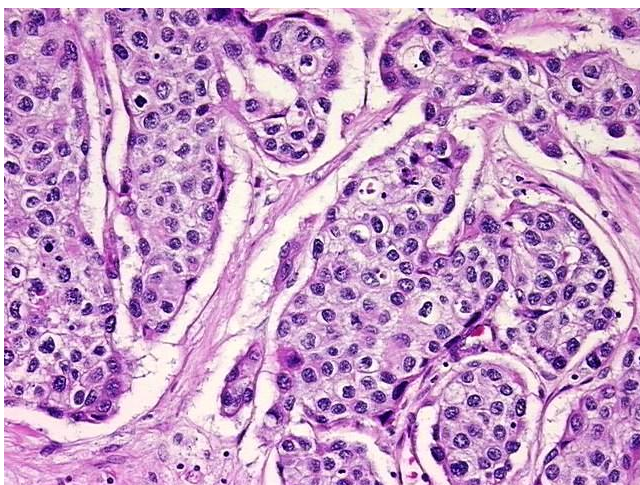


[View online »](#)

| | |
|------------------------------|---|
| Minimum Stage Grouping: | IV |
| T (Extent of Primary Tumor): | pT3a |
| N (Lymph node metastasis): | pN2 |
| M (Distant metastasis): | pMX |
| Storage: | Store FFPE tissue sections at +4°C. |
| Stability: | All FFPE tissue sections are stable for 1 year from date of purchase. |

Product images:

4x Image



20x Image