

Product datasheet for **CS800844**

Tissue FFPE Sections, Endometriotic tissue

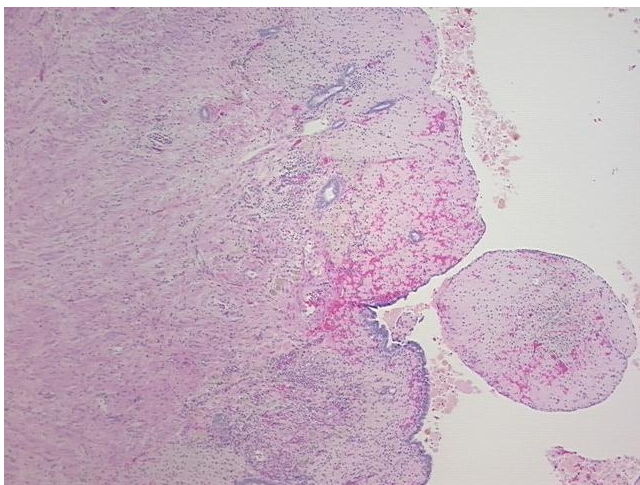
Product data:

Product Type:	FFPE Sections
Disease State:	Other Disease
Diagnosis Category:	Endometriosis
Tissue:	Endometriotic tissue
Frozen Sample ID:	PA00000691
Case ID:	CU0000000641
Tissue of Origin:	Endometriotic tissue
Site of Finding:	Fallopian tube
Appearance:	L
Sample Diagnosis (from Pathology Verification):	Endometriosis
Normal:	0%
Lesional:	100%
Tumor:	0%
Tumor Hypo/Acellular Stroma:	0%
Tumor Hypercellular Stroma:	0%
Necrosis:	0%
Pathology Verification notes from H&E review:	Endometriosis present
CASE Diagnosis (from medical center path report):	Adenocarcinoma of ovary, clear cell, papillary
Age:	61
Gender:	Female
Tumor Grade:	Not Reported

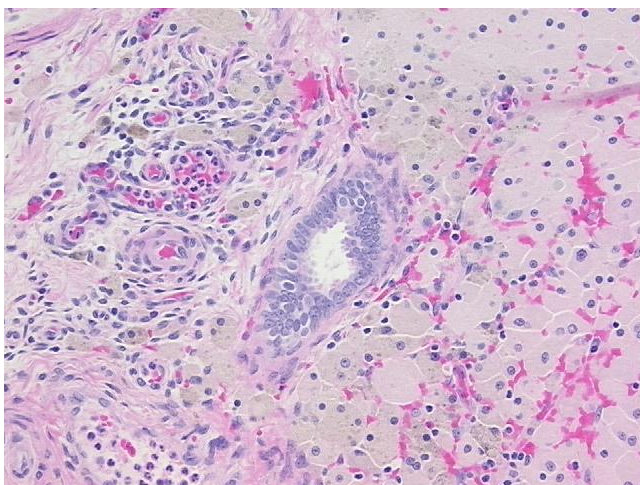


[View online »](#)

Minimum Stage Grouping:	IIIC
T (Extent of Primary Tumor):	T3a
N (Lymph node metastasis):	N1
M (Distant metastasis):	MX
Storage:	Store FFPE tissue sections at +4°C.
Stability:	All FFPE tissue sections are stable for 1 year from date of purchase.

Product images:

4x Image



20x Image