

Product datasheet for **CS800768**

Tissue FFPE Sections, Ovary

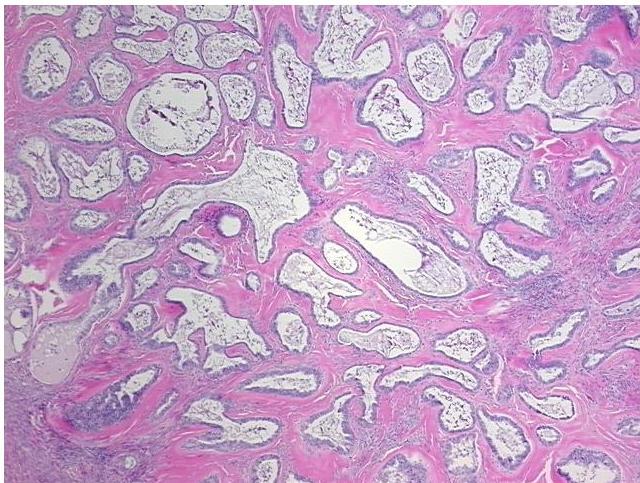
Product data:

Product Type:	FFPE Sections
Disease State:	Other Disease
Diagnosis Category:	Benign Tumors
Tissue:	Ovary
Frozen Sample ID:	PA00000536
Case ID:	CU0000000608
Tissue of Origin:	Ovary
Site of Finding:	Ovary
Appearance:	T
Sample Diagnosis (from Pathology Verification):	Adenofibroma of ovary
Normal:	0%
Lesional:	0%
Tumor:	60%
Tumor Hypo/Acellular Stroma:	0%
Tumor Hypercellular Stroma:	40%
Necrosis:	0%
Pathology Verification notes from H&E review:	Contains adenofibromatous component; No definitive borderline tumor present
CASE Diagnosis (from medical center path report):	Tumor of ovary, serous, borderline
Age:	76
Gender:	Female
Tumor Grade:	Not Reported

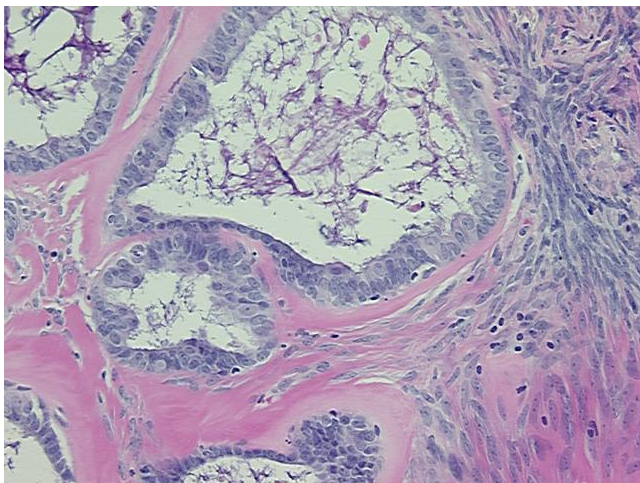


[View online »](#)

Minimum Stage Grouping:	IA
T (Extent of Primary Tumor):	T1a
N (Lymph node metastasis):	N0
M (Distant metastasis):	MX
Storage:	Store FFPE tissue sections at +4°C.
Stability:	All FFPE tissue sections are stable for 1 year from date of purchase.

Product images:

4x Image



20x Image