

## Product datasheet for **CS800762**

### Tissue FFPE Sections, Liver

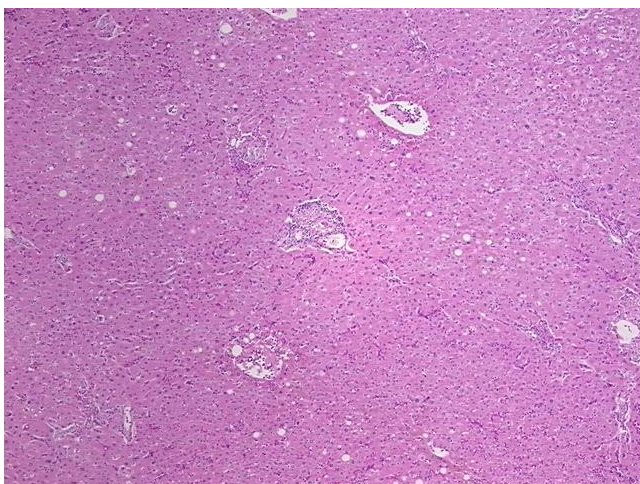
#### Product data:

|   |   |
|---|---|
| Product Type:                                     | FFPE Sections   |
| Disease State:                                    | Normal  |
| Diagnosis Category:                               | Normal  |
| Tissue:   | Liver   |
| Frozen Sample ID:                                 | PA0000052C  |
| Case ID:  | CU0000000604  |
| Tissue of Origin:                                 | Liver   |
| Site of Finding:                                  | Liver   |
| Appearance:                                       | R   |
| Sample Diagnosis (from Pathology Verification):   | Within normal limits  |
| Normal:   | 100%  |
| Lesional:   | 0%  |
| Tumor:  | 0%  |
| Tumor Hypo/Acellular Stroma:                      | 0%  |
| Tumor Hypercellular Stroma:                       | 0%  |
| Necrosis:   | 0%  |
| Pathology Verification notes from H&E review:     | 95% Lobules, 5% Portal triads; Contains focal inflammatory infiltrate |
| CASE Diagnosis (from medical center path report): | Carcinoma of liver, hepatocellular                                    |
| Age:  | 81  |
| Gender:   | Male  |
| Tumor Grade:                                      | Not Reported  |

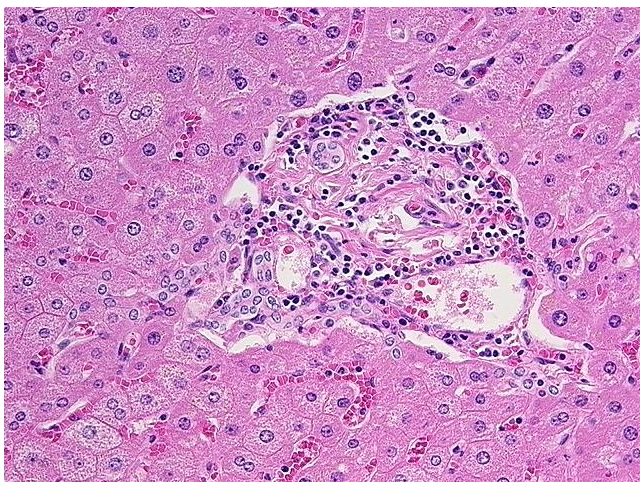


[View online »](#)

|                              |  |
|------------------------------|--|
| Minimum Stage Grouping:      | IIIA   |
| T (Extent of Primary Tumor): | T3   |
| N (Lymph node metastasis):   | NX   |
| M (Distant metastasis):      | MX   |
| Diagnostic Test Results:     | Cytokeratin CAM5.2 ~ CAM5.2 ! by IHC,Positive; Alpha-1-fetoprotein ~ AFP ! by IHC,Positive; CD66e ~ CEACAM5 ! by IHC,Positive; Cytokeratin AE1/AE3 ~ AE1/AE3 ! by IHC,Positive |
| Storage:                     | Store FFPE tissue sections at +4°C.  |
| Stability:                   | All FFPE tissue sections are stable for 1 year from date of purchase.  |

**Product images:**

4x Image



20x Image