

## Product datasheet for **CS800650**

### Tissue FFPE Sections, Endometrium

#### Product data:

Product Type:	FFPE Sections
Disease State:	Cancer
Diagnosis Category:	Endometrial Cancer
Tissue:	Endometrium
Frozen Sample ID:	PA00000DA0
Case ID:	CU0000000533
Tissue of Origin:	Endometrium
Site of Finding:	Omentum
Appearance:	T
Sample Diagnosis (from Pathology Verification):	Adenocarcinoma of endometrium, serous, metastatic
Normal:	15%
Lesional:	0%
Tumor:	75%
Tumor Hypo/Acellular Stroma:	0%
Tumor Hypercellular Stroma:	5%
Necrosis:	5%
CASE Diagnosis (from medical center path report):	Adenocarcinoma of endometrium, serous
Age:	66
Gender:	Female
Tumor Grade:	FIGO G3: Poorly differentiated
Minimum Stage Grouping:	IIIA



[View online »](#)

T (Extent of Primary Tumor): T3a

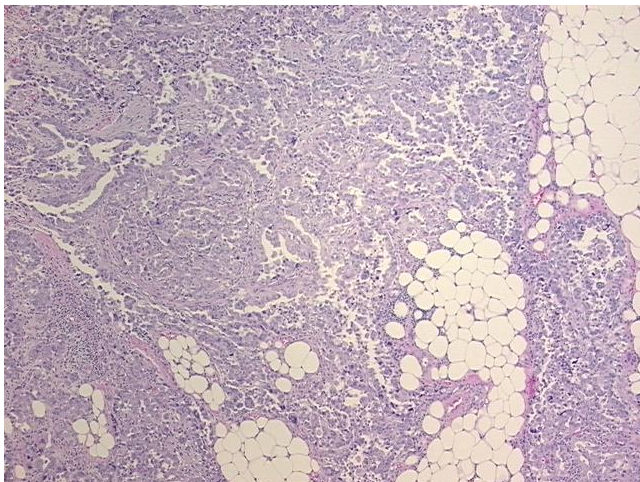
N (Lymph node metastasis): NX

M (Distant metastasis): MX

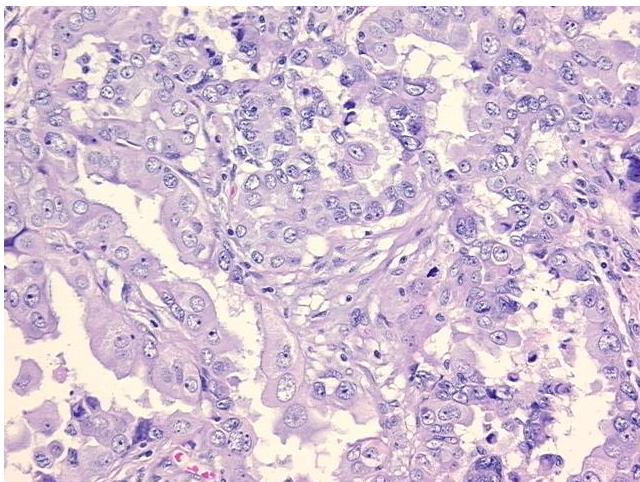
Storage: Store FFPE tissue sections at +4°C.

Stability: All FFPE tissue sections are stable for 1 year from date of purchase.

### Product images:



4x Image



20x Image