

## Product datasheet for **CS800628**

### Tissue FFPE Sections, Adipose tissue

#### Product data:

Product Type:	FFPE Sections
Disease State:	Other Disease
Diagnosis Category:	Benign Tumors
Tissue:	Adipose tissue
Frozen Sample ID:	PA0000043B
Case ID:	CU0000000522
Tissue of Origin:	Adipose tissue
Site of Finding:	Thigh
Appearance:	T
Sample Diagnosis (from Pathology Verification):	Lipoma, spindle cell
Normal:	0%
Lesional:	0%
Tumor:	80%
Tumor Hypo/Acellular Stroma:	0%
Tumor Hypercellular Stroma:	20%
Necrosis:	0%
CASE Diagnosis (from medical center path report):	Lipoma, spindle cell
Age:	51
Gender:	Male
Tumor Grade:	Not Reported
T (Extent of Primary Tumor):	Not Reported



[View online »](#)

N (Lymph node metastasis):

Not Reported

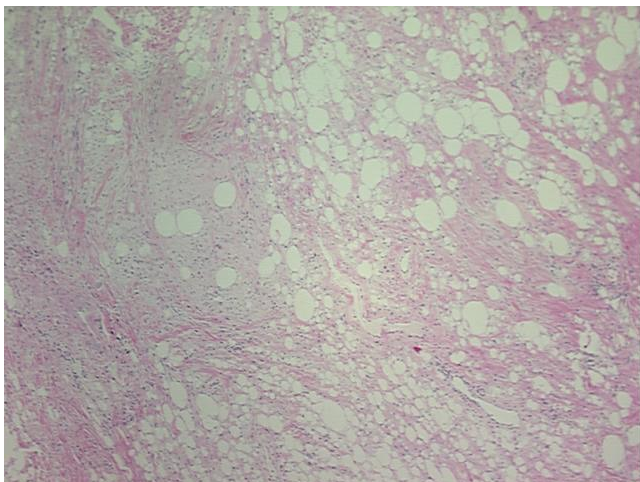
Storage:

Store FFPE tissue sections at +4°C.

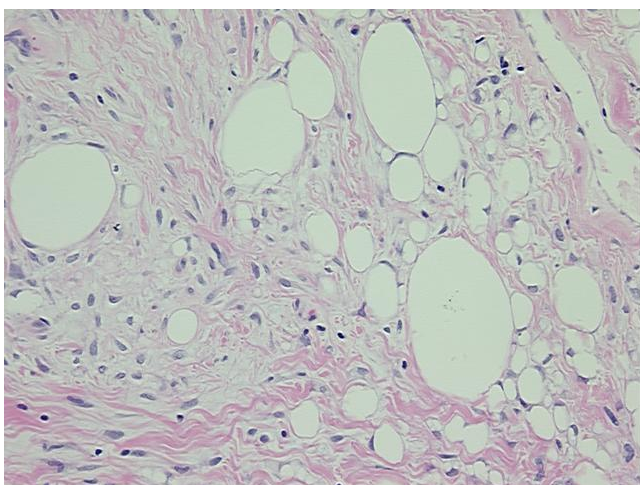
Stability:

All FFPE tissue sections are stable for 1 year from date of purchase.

### Product images:



4x Image



20x Image