

Product datasheet for **CS800625**

Tissue FFPE Sections, Breast

Product data:

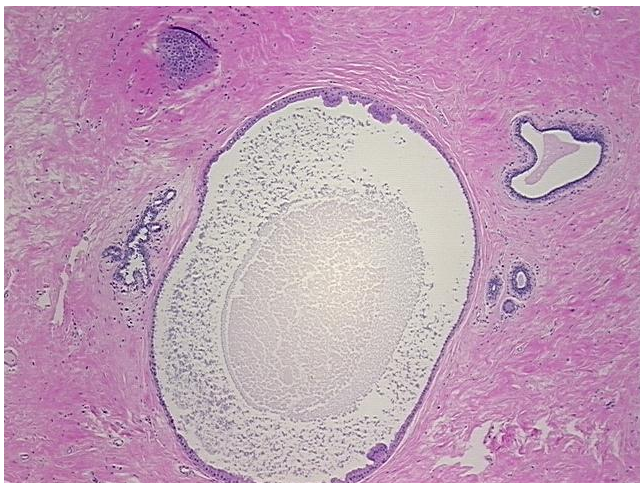
Product Type:	FFPE Sections
Disease State:	Other Disease
Diagnosis Category:	Metaplasia
Tissue:	Breast
Frozen Sample ID:	PA0000096E
Case ID:	CU0000000518
Tissue of Origin:	Breast
Site of Finding:	Breast
Appearance:	L
Sample Diagnosis (from Pathology Verification):	Apocrine metaplasia of breast, papillary
Normal:	90%
Lesional:	10%
Tumor:	0%
Tumor Hypo/Acellular Stroma:	0%
Tumor Hypercellular Stroma:	0%
Necrosis:	0%
Pathology Verification notes from H&E review:	normal: 30% glandular epithelium, 60% stroma, 10% adipose tissue
CASE Diagnosis (from medical center path report):	Apocrine metaplasia of breast, papillary
Age:	51
Gender:	Female
Storage:	Store FFPE tissue sections at +4°C.



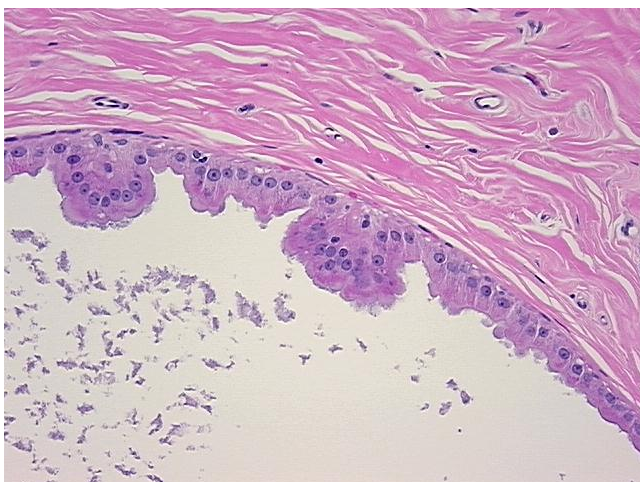
[View online »](#)

Stability: All FFPE tissue sections are stable for 1 year from date of purchase.

Product images:



4x Image



20x Image