

Product datasheet for **CS800617**

Tissue FFPE Sections, Endometrium

Product data:

Product Type:	FFPE Sections
Disease State:	Cancer
Diagnosis Category:	Endometrial Cancer
Tissue:	Endometrium
Frozen Sample ID:	PA00000D9C
Case ID:	CU0000000515
Tissue of Origin:	Endometrium
Site of Finding:	Uterus
Appearance:	T
Sample Diagnosis (from Pathology Verification):	Adenocarcinoma of endometrium, squamous features
Normal:	0%
Lesional:	0%
Tumor:	75%
Tumor Hypo/Acellular Stroma:	0%
Tumor Hypercellular Stroma:	20%
Necrosis:	5%
CASE Diagnosis (from medical center path report):	Adenocarcinoma of endometrium, endometrioid, squamous features
Age:	61
Gender:	Female
Tumor Grade:	FIGO G1: Well differentiated
Minimum Stage Grouping:	IIA



[View online »](#)

T (Extent of Primary Tumor): T2a

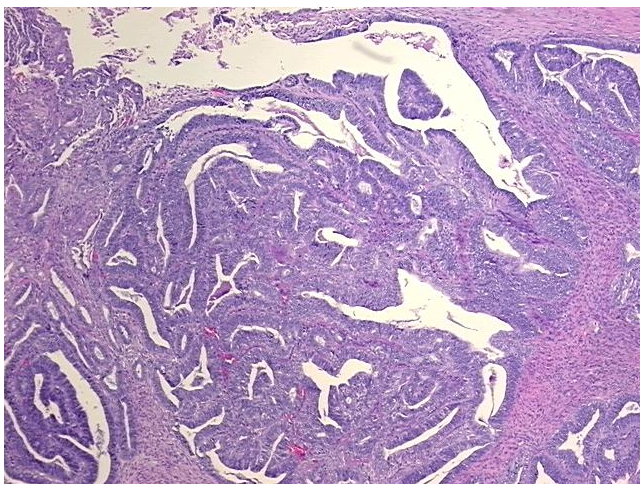
N (Lymph node metastasis): N0

M (Distant metastasis): MX

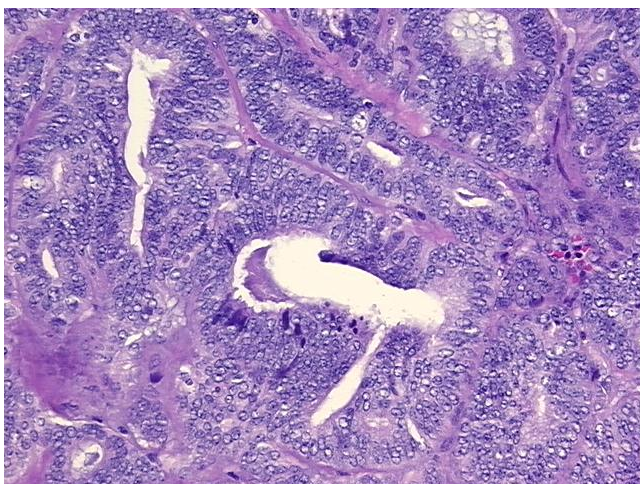
Storage: Store FFPE tissue sections at +4°C.

Stability: All FFPE tissue sections are stable for 1 year from date of purchase.

Product images:



4x Image



20x Image