

## Product datasheet for **CS800588**

### Tissue FFPE Sections, Lymphoid tissue

#### Product data:

Product Type:	FFPE Sections
Disease State:	Cancer
Diagnosis Category:	Lymphoma
Tissue:	Lymphoid tissue
Frozen Sample ID:	PA000003F4
Case ID:	CU0000000496
Tissue of Origin:	Lymphoid tissue
Site of Finding:	Mediastinum
Appearance:	T
Sample Diagnosis (from Pathology Verification):	Lymphoma, Hodgkin, nodular sclerosing
Normal:	0%
Lesional:	0%
Tumor:	20%
Tumor Hypo/Acellular Stroma:	20%
Tumor Hypercellular Stroma:	60%
Necrosis:	0%
Pathology Verification notes from H&E review:	Hypercellular stroma comprised of small lymphocytes, eosinophils, plasma cells and histiocytes; Numerous Reed Sternberg cells and variants
CASE Diagnosis (from medical center path report):	Lymphoma, Hodgkin, nodular sclerosing
Age:	34
Gender:	Male
Tumor Grade:	Not Reported

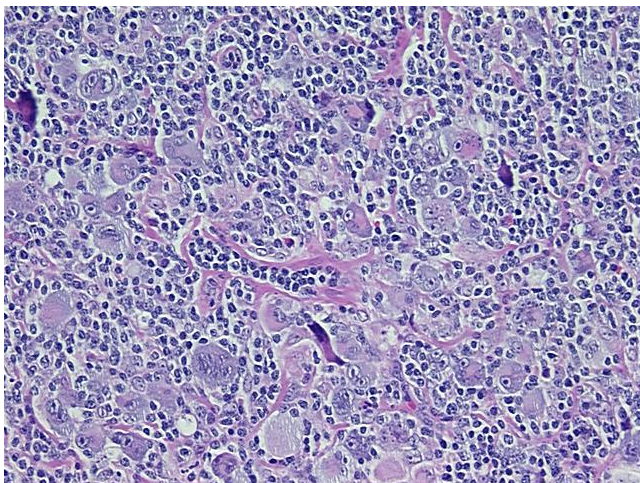


[View online »](#)

Minimum Stage Grouping:	I
T (Extent of Primary Tumor):	Not applicable
N (Lymph node metastasis):	Not applicable
M (Distant metastasis):	Not applicable
Storage:	Store FFPE tissue sections at +4°C.
Stability:	All FFPE tissue sections are stable for 1 year from date of purchase.

**Product images:**

4x Image



20x Image