

Product datasheet for CS800492

Tissue FFPE Sections, Muscle tissue

Product data:

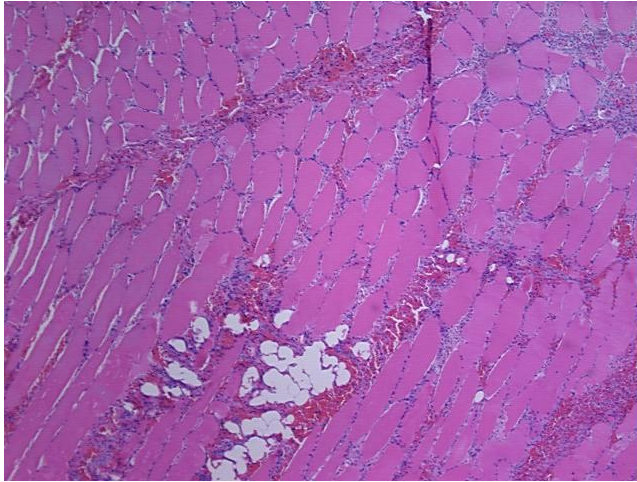
Product Type:	FFPE Sections
Disease State:	Other Disease
Diagnosis Category:	Muscle Disease
Tissue:	Muscle tissue
Frozen Sample ID:	PA0000034F
Case ID:	CU0000000422
Tissue of Origin:	Muscle tissue
Site of Finding:	Muscle tissue
Appearance:	L
Sample Diagnosis (from Pathology Verification):	Myositis
Normal:	50%
Lesional:	50%
Tumor:	0%
Tumor Hypo/Acellular Stroma:	0%
Tumor Hypercellular Stroma:	0%
Necrosis:	0%
Pathology Verification notes from H&E review:	Lesion (50%): Myositis 100%; Other Features/Comments: Skeletal muscle with focal increased interstitial inflammation and macrophages
CASE Diagnosis (from medical center path report):	Fracture of bone
Age:	36
Gender:	Male
Storage:	Store FFPE tissue sections at +4°C.



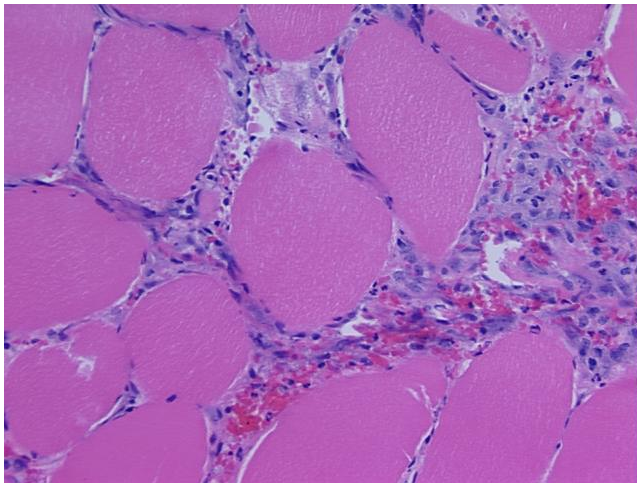
[View online »](#)

Stability: All FFPE tissue sections are stable for 1 year from date of purchase.

Product images:



4x Image



20x Image