

## Product datasheet for **CS800431**

### Tissue FFPE Sections, Ovary

#### Product data:

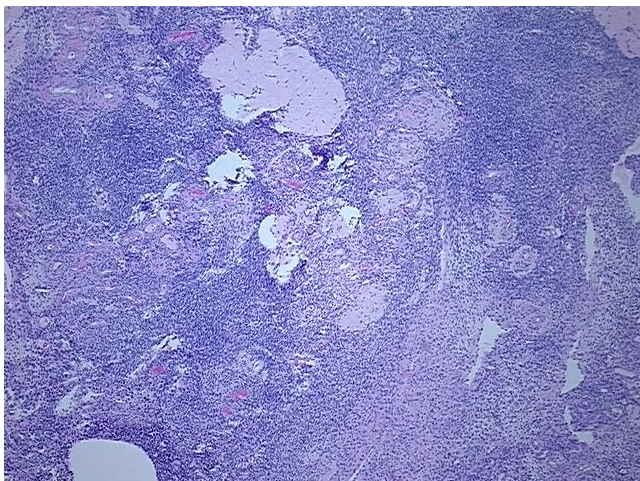
Product Type:	FFPE Sections
Disease State:	Normal
Diagnosis Category:	Normal
Tissue:	Ovary
Frozen Sample ID:	PA15477082
Case ID:	CU0000000378
Tissue of Origin:	Ovary
Site of Finding:	Ovary
Appearance:	R
Sample Diagnosis (from Pathology Verification):	Within normal limits
Normal:	100%
Lesional:	0%
Tumor:	0%
Tumor Hypo/Acellular Stroma:	0%
Tumor Hypercellular Stroma:	0%
Necrosis:	0%
Pathology Verification notes from H&E review:	Non Tumor Structures: 75% Ovarian stroma, 10% Hilar vessels, 15% corpus albicans
CASE Diagnosis (from medical center path report):	Endometriosis
Age:	56
Gender:	Female
Storage:	Store FFPE tissue sections at +4°C.



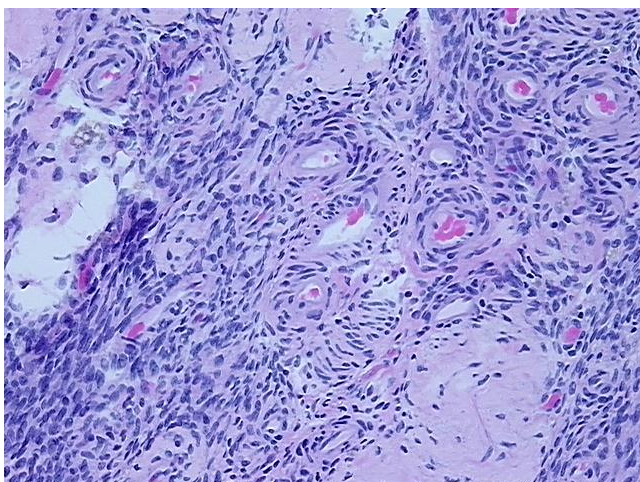
[View online »](#)

Stability: All FFPE tissue sections are stable for 1 year from date of purchase.

**Product images:**



4x Image



20x Image