

## Product datasheet for CS800401

### Tissue FFPE Sections, Endometrium

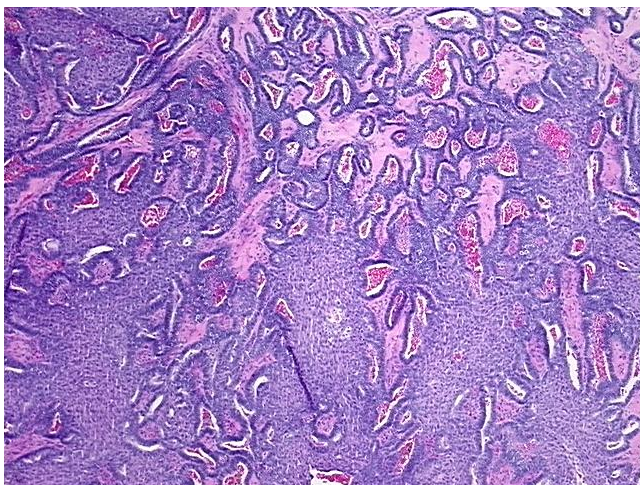
#### Product data:

Product Type:	FFPE Sections
Disease State:	Cancer
Diagnosis Category:	Endometrial Cancer
Tissue:	Endometrium
Frozen Sample ID:	PA000002B6
Case ID:	CU0000000363
Tissue of Origin:	Endometrium
Site of Finding:	Mesosalpinx
Appearance:	T
Sample Diagnosis (from Pathology Verification):	Adenocarcinoma of mesosalpinx, endometrioid
Normal:	25%
Lesional:	0%
Tumor:	75%
Tumor Hypo/Acellular Stroma:	0%
Tumor Hypercellular Stroma:	0%
Necrosis:	0%
Pathology Verification notes from H&E review:	Tumor: with squamous differentiation
CASE Diagnosis (from medical center path report):	Adenocarcinoma of mesosalpinx, endometrioid
Age:	41
Gender:	Female
Tumor Grade:	FIGO G1: Well differentiated

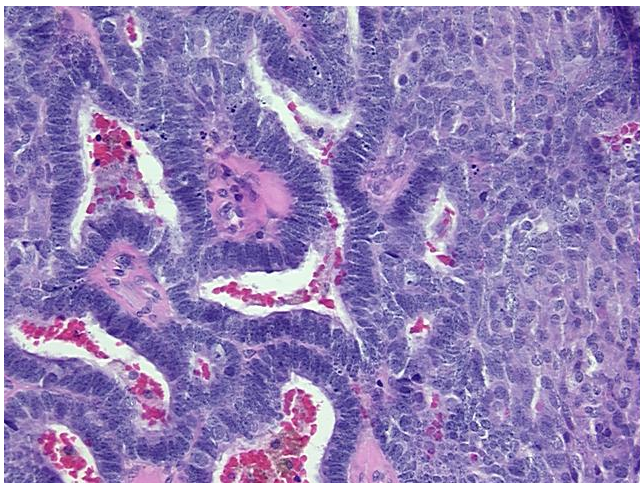


[View online »](#)

Minimum Stage Grouping:	Not Reported
T (Extent of Primary Tumor):	Not Reported
N (Lymph node metastasis):	Not Reported
M (Distant metastasis):	Not Reported
Storage:	Store FFPE tissue sections at +4°C.
Stability:	All FFPE tissue sections are stable for 1 year from date of purchase.

**Product images:**

4x Image



20x Image