

## Product datasheet for **CS800364**

### Tissue FFPE Sections, Cervix

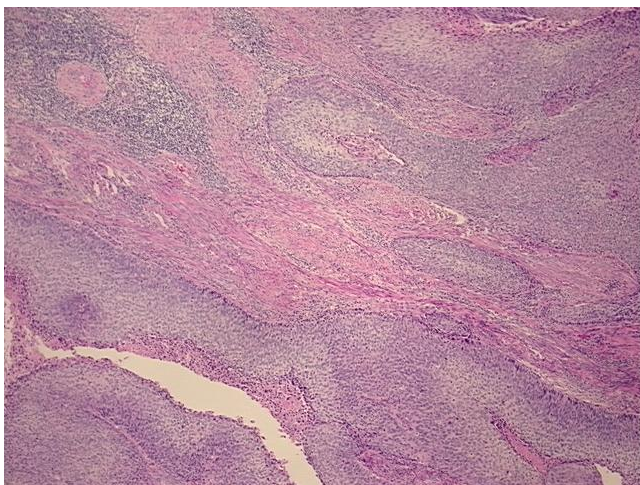
#### Product data:

Product Type:	FFPE Sections
Disease State:	Cancer
Diagnosis Category:	Cervical Cancer
Tissue:	Cervix
Frozen Sample ID:	PA00000241
Case ID:	CU0000000338
Tissue of Origin:	Cervix
Site of Finding:	Cervix
Appearance:	T
Sample Diagnosis (from Pathology Verification):	Carcinoma of cervix, squamous cell, large cell, non-keratinizing
Normal:	0%
Lesional:	0%
Tumor:	75%
Tumor Hypo/Acellular Stroma:	0%
Tumor Hypercellular Stroma:	20%
Necrosis:	5%
Pathology Verification notes from H&E review:	Hypercellular stroma consists of numerous fibroblasts and small lymphocytes
CASE Diagnosis (from medical center path report):	Carcinoma of cervix, squamous cell, large cell, non-keratinizing
Age:	65
Gender:	Female
Tumor Grade:	Not Reported

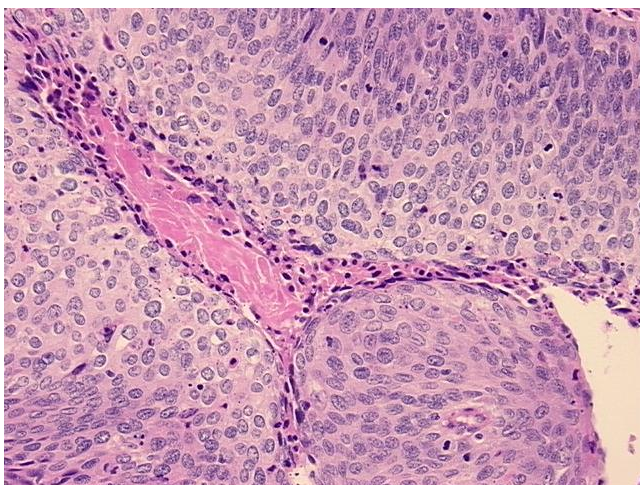


[View online »](#)

Minimum Stage Grouping:	IIB
T (Extent of Primary Tumor):	T2b
N (Lymph node metastasis):	N0
M (Distant metastasis):	MX
Storage:	Store FFPE tissue sections at +4°C.
Stability:	All FFPE tissue sections are stable for 1 year from date of purchase.

**Product images:**

4x Image



20x Image