

Product datasheet for **CS800363**

Tissue FFPE Sections, Fallopian tube

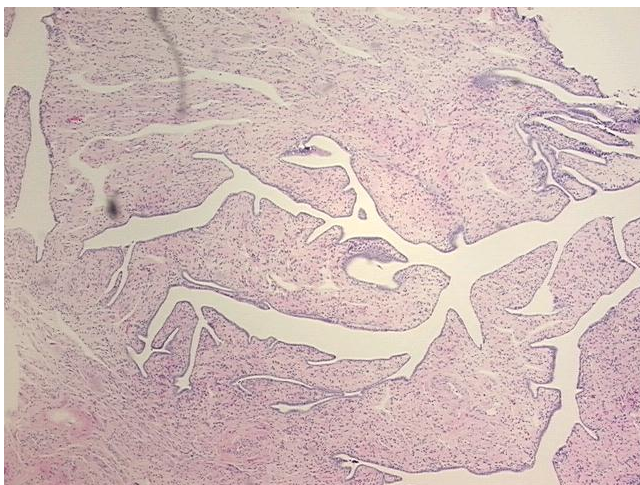
Product data:

Product Type:	FFPE Sections
Disease State:	Normal
Diagnosis Category:	Normal
Tissue:	Fallopian tube
Frozen Sample ID:	PA00000240
Case ID:	CU0000000338
Tissue of Origin:	Fallopian tube
Site of Finding:	Fallopian tube
Appearance:	R
Sample Diagnosis (from Pathology Verification):	Within normal limits
Normal:	100%
Lesional:	0%
Tumor:	0%
Tumor Hypo/Acellular Stroma:	0%
Tumor Hypercellular Stroma:	0%
Necrosis:	0%
Pathology Verification notes from H&E review:	10% mucosa, 80% muscle, 10% adventitia
CASE Diagnosis (from medical center path report):	Carcinoma of cervix, squamous cell, large cell, non-keratinizing
Age:	65
Gender:	Female
Tumor Grade:	Not Reported

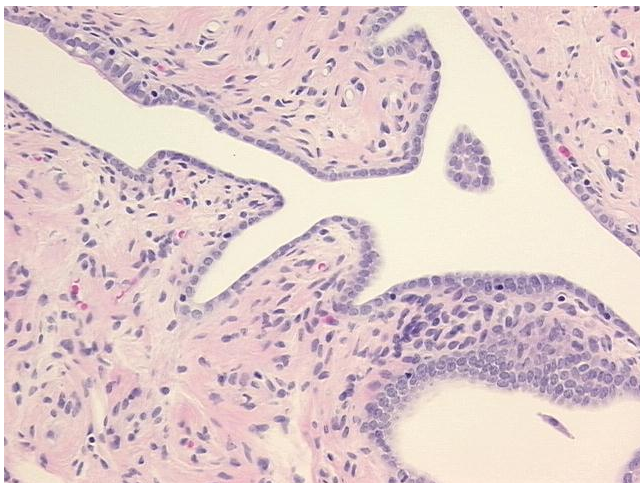


[View online »](#)

Minimum Stage Grouping:	IIB
T (Extent of Primary Tumor):	T2b
N (Lymph node metastasis):	N0
M (Distant metastasis):	MX
Storage:	Store FFPE tissue sections at +4°C.
Stability:	All FFPE tissue sections are stable for 1 year from date of purchase.

Product images:

4x Image



20x Image