

## Product datasheet for **CS800330**

### Tissue FFPE Sections, Brain

#### Product data:

|   |                                      |
|---|--------------------------------------|
| Product Type:                                     | FFPE Sections                        |
| Disease State:                                    | Other Disease                        |
| Diagnosis Category:                               | Gliosis                              |
| Tissue:   | Brain                                |
| Frozen Sample ID:                                 | PA00000DB5                           |
| Case ID:  | CU0000000318                         |
| Tissue of Origin:                                 | Brain                                |
| Site of Finding:                                  | Brain                                |
| Appearance:                                       | L                                    |
| Sample Diagnosis (from Pathology Verification):   | Gliosis                              |
| Normal:   | 5%                                   |
| Lesional:   | 95%                                  |
| Tumor:  | 0%                                   |
| Tumor Hypo/Acellular Stroma:                      | 0%                                   |
| Tumor Hypercellular Stroma:                       | 0%                                   |
| Necrosis:   | 0%                                   |
| Pathology Verification notes from H&E review:     | lesion: 15% neurons, 85% glial cells |
| CASE Diagnosis (from medical center path report): | Astrocytoma, anaplastic              |
| Age:  | 30                                   |
| Gender:   | Male                                 |
| Tumor Grade:                                      | WHO Grade III                        |

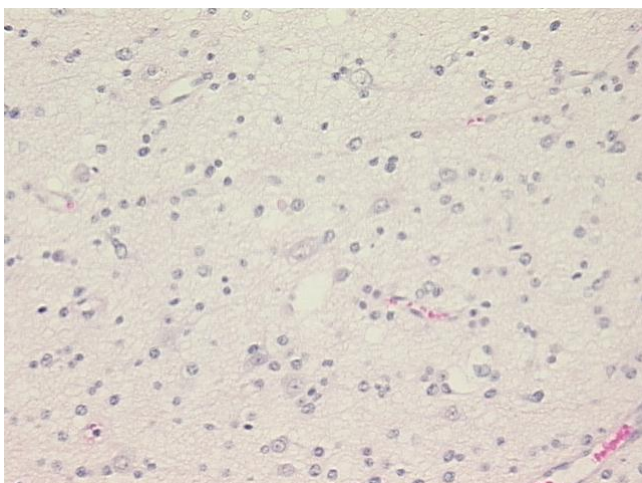


[View online »](#)

|                              |   |
|------------------------------|---|
| Minimum Stage Grouping:      | Not Reported  |
| T (Extent of Primary Tumor): | Not Reported  |
| N (Lymph node metastasis):   | Not Reported  |
| M (Distant metastasis):      | Not Reported  |
| Storage:                     | Store FFPE tissue sections at +4°C.                                   |
| Stability:                   | All FFPE tissue sections are stable for 1 year from date of purchase. |

**Product images:**

4x Image



20x Image