

Product datasheet for **CS800264**

Tissue FFPE Sections, Ovary: left

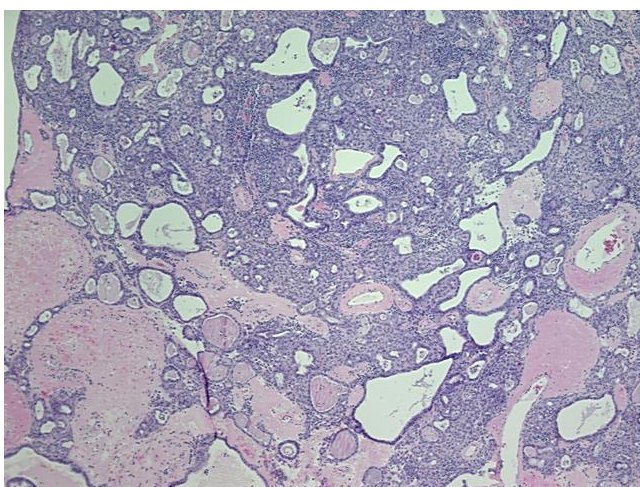
Product data:

Product Type:	FFPE Sections
Disease State:	Cancer
Diagnosis Category:	Ovarian Cancer
Tissue:	Ovary
Frozen Sample ID:	PA00000267
Case ID:	CU0000000261
Tissue of Origin:	Ovary: left
Site of Finding:	Ovary: left
Appearance:	T
Sample Diagnosis (from Pathology Verification):	Carcinoma of ovary, endometrioid
Normal:	0%
Lesional:	0%
Tumor:	60%
Tumor Hypo/Acellular Stroma:	30%
Tumor Hypercellular Stroma:	10%
Necrosis:	0%
CASE Diagnosis (from medical center path report):	Adenocarcinoma of mesosalpinx, endometrioid
Age:	65
Gender:	Female
Tumor Grade:	FIGO G1: Well differentiated
Minimum Stage Grouping:	Not Reported

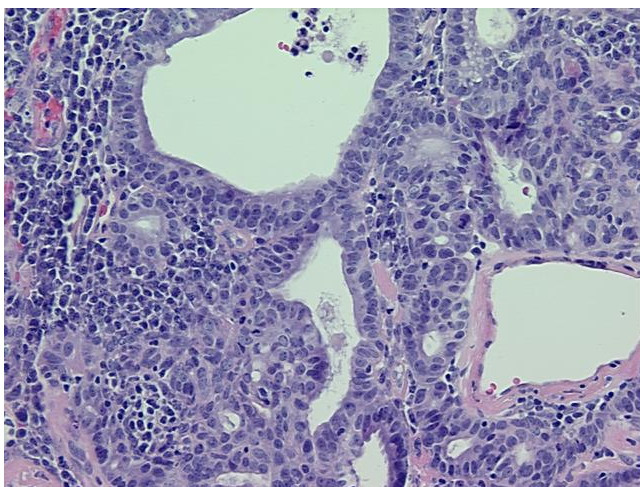


[View online »](#)

T (Extent of Primary Tumor):	Not Reported
N (Lymph node metastasis):	Not Reported
M (Distant metastasis):	Not Reported
Diagnostic Test Results:	CD227 ~ MUC1 ~ EMA ~ CA15-3 ! by IHC,Positive; Epithelial specific antigen ~ BerEP4 ~ MOC31 ! by IHC,Positive; Cytokeratin 7 ~ CK7 ! by IHC,Positive; CA125 ~ Ovarian Cancer Antigen,Positive; Calretinin,Negative
Storage:	Store FFPE tissue sections at +4°C.
Stability:	All FFPE tissue sections are stable for 1 year from date of purchase.

Product images:

4x Image



20x Image