

## Product datasheet for **CS800164**

### Tissue FFPE Sections, Skin

#### Product data:

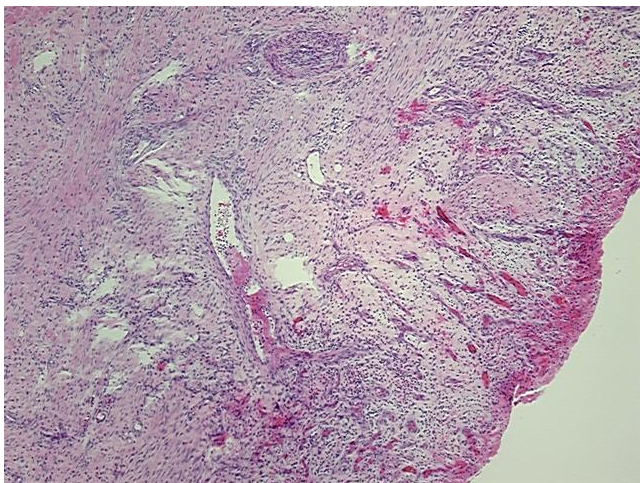
|   |   |
|---|---|
| Product Type:                                     | FFPE Sections                                   |
| Disease State:                                    | Other Disease                                   |
| Diagnosis Category:                               | Ulcers  |
| Tissue:   | Skin  |
| Frozen Sample ID:                                 | PA00000132                                      |
| Case ID:  | CU0000000176                                    |
| Tissue of Origin:                                 | Skin  |
| Site of Finding:                                  | Skin  |
| Appearance:                                       | L   |
| Sample Diagnosis (from Pathology Verification):   | Ulcer of skin, ischemic necrosis                |
| Normal:   | 0%  |
| Lesional:   | 100%  |
| Tumor:  | 0%  |
| Tumor Hypo/Acellular Stroma:                      | 0%  |
| Tumor Hypercellular Stroma:                       | 0%  |
| Necrosis:   | 0%  |
| Pathology Verification notes from H&E review:     | 40% Epidermis, 50% Subcutaneous fat, 10% Fascia |
| CASE Diagnosis (from medical center path report): | Ulcer of skin, ischemic necrosis                |
| Age:  | 35  |
| Gender:   | Male  |
| Storage:  | Store FFPE tissue sections at +4°C.             |



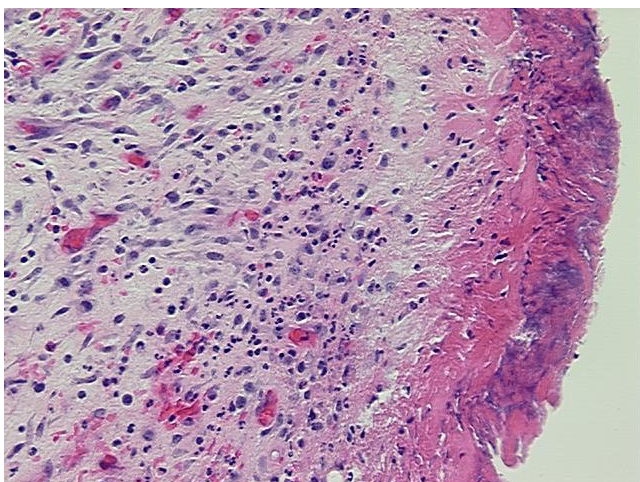
[View online »](#)

Stability: All FFPE tissue sections are stable for 1 year from date of purchase.

**Product images:**



4x Image



20x Image