

Product datasheet for **CS800050**

Tissue FFPE Sections, Muscle tissue

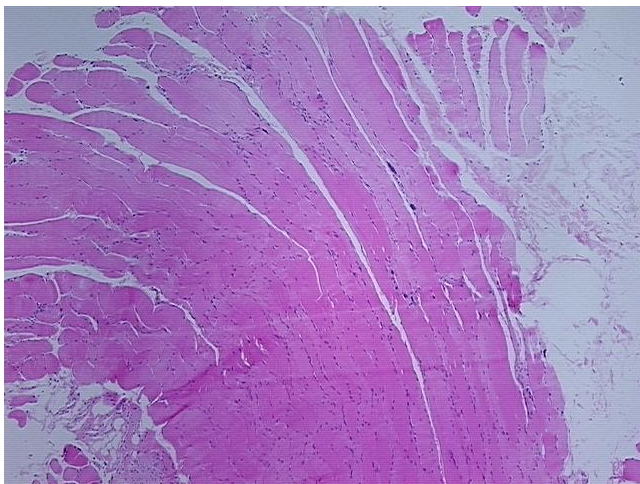
Product data:

Product Type:	FFPE Sections
Disease State:	Normal
Diagnosis Category:	Normal
Tissue:	Muscle tissue
Frozen Sample ID:	PA0000006B
Case ID:	CU0000000064
Tissue of Origin:	Muscle tissue
Site of Finding:	Muscle tissue
Appearance:	R
Sample Diagnosis (from Pathology Verification):	Within normal limits
Normal:	100%
Lesional:	0%
Tumor:	0%
Tumor Hypo/Acellular Stroma:	0%
Tumor Hypercellular Stroma:	0%
Necrosis:	0%
Pathology Verification notes from H&E review:	85% Muscle, 15% Fibroadipose tissue and nerve
CASE Diagnosis (from medical center path report):	Plasmacytoma
Age:	65
Gender:	Male
Tumor Grade:	Not Reported

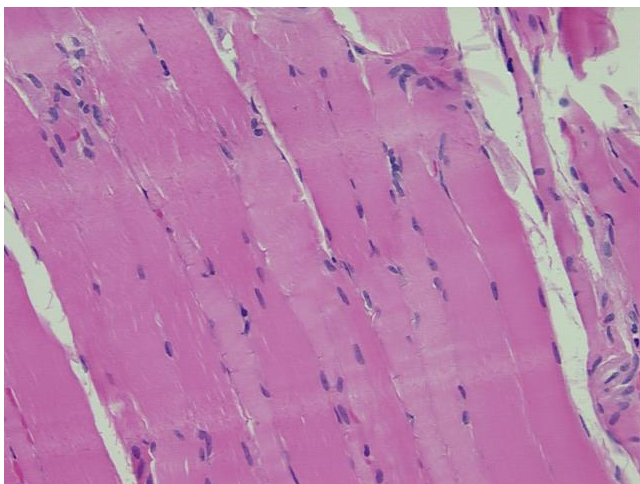


[View online »](#)

Minimum Stage Grouping:	Not Reported
T (Extent of Primary Tumor):	Not Reported
N (Lymph node metastasis):	Not Reported
M (Distant metastasis):	Not Reported
Diagnostic Test Results:	Myoglobin ! by IHC,Negative; Vimentin ~ VIM ! by IHC,Positive; Kappa light chain ! by IHC,Negative; Lambda light chain ! by IHC,Positive; CD79a ~ Ig alpha ! by IHC,Positive
Storage:	Store FFPE tissue sections at +4°C.
Stability:	All FFPE tissue sections are stable for 1 year from date of purchase.

Product images:

4x Image



20x Image