

## Product datasheet for **CS800044**

### Tissue FFPE Sections, Brain

#### Product data:

Product Type:	FFPE Sections
Disease State:	Cancer
Diagnosis Category:	Brain Cancer
Tissue:	Brain
Frozen Sample ID:	PA0000005C
Case ID:	CU0000000057
Tissue of Origin:	Brain
Site of Finding:	Brain
Appearance:	Tumor
Sample Diagnosis (from Pathology Verification):	Astrocytoma, anaplastic
Normal:	10%
Lesional:	0%
Tumor:	60%
Tumor Hypo/Acellular Stroma:	30%
Tumor Hypercellular Stroma:	0%
Necrosis:	0%
Pathology Verification notes from H&E review:	In the absence of unequivocal vascular proliferation, it is unclear whether this represents a glioblastoma or anaplastic astrocytoma.
CASE Diagnosis (from medical center path report):	Astrocytoma, high grade, consistent with Anaplastic astrocytoma
Age:	40
Gender:	Male
Tumor Grade:	WHO Grade III



[View online »](#)

Minimum Stage Grouping: Not Reported

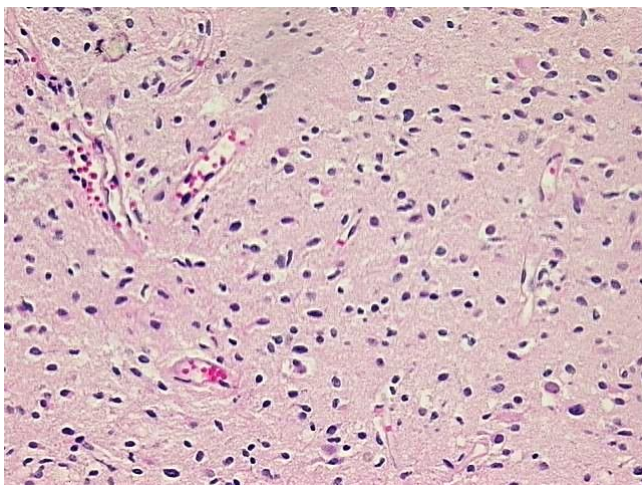
Storage: Store FFPE tissue sections at +4°C.

Stability: All FFPE tissue sections are stable for 1 year from date of purchase.

### Product images:



4x Image



20x Image