

Product datasheet for CS800032

Tissue FFPE Sections, Lymphoid tissue

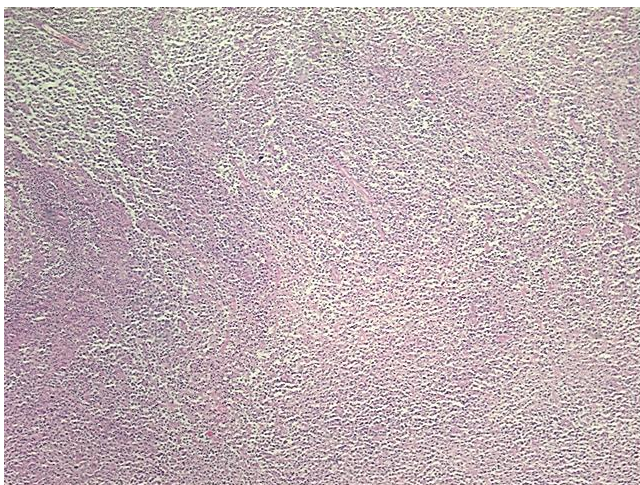
Product data:

Product Type:	FFPE Sections
Disease State:	Cancer
Diagnosis Category:	Lymphoma
Tissue:	Lymphoid tissue
Frozen Sample ID:	PA00000941
Case ID:	CU0000000045
Tissue of Origin:	Lymphoid tissue
Site of Finding:	Spleen
Appearance:	T
Sample Diagnosis (from Pathology Verification):	Lymphoma, large B-cell, diffuse
Normal:	30%
Lesional:	0%
Tumor:	50%
Tumor Hypo/Acellular Stroma:	0%
Tumor Hypercellular Stroma:	0%
Necrosis:	20%
Pathology Verification notes from H&E review:	30% of uninvolved red and white pulp
CASE Diagnosis (from medical center path report):	Lymphoma, large B-cell, diffuse
Age:	55
Gender:	Male
Tumor Grade:	Not Reported

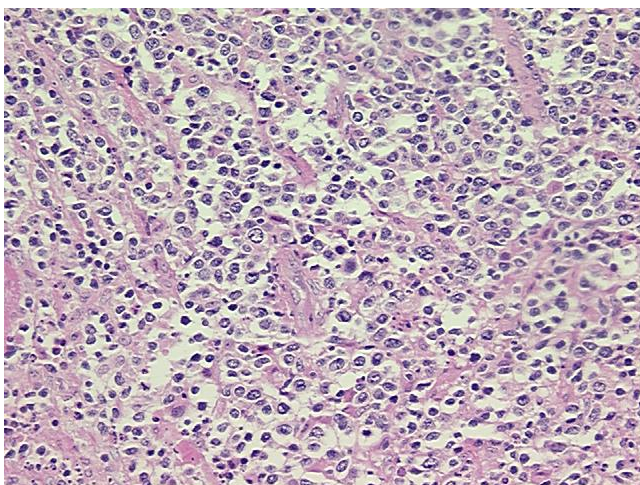


[View online »](#)

Minimum Stage Grouping:	IV
T (Extent of Primary Tumor):	Not applicable
N (Lymph node metastasis):	Not applicable
M (Distant metastasis):	Not applicable
Diagnostic Test Results:	Kappa light chain ! by IHC,Reported as Performed or Reviewed; BCL2 oncoprotein ! by IHC,Positive; Lambda light chain ! by IHC,Reported as Performed or Reviewed; CD20 ~ B1 ~ Leu16 ! by IHC,Positive
Storage:	Store FFPE tissue sections at +4°C.
Stability:	All FFPE tissue sections are stable for 1 year from date of purchase.

Product images:

4x Image



20x Image