

Product datasheet for **CS716842**

Tissue FFPE Sections, Lung

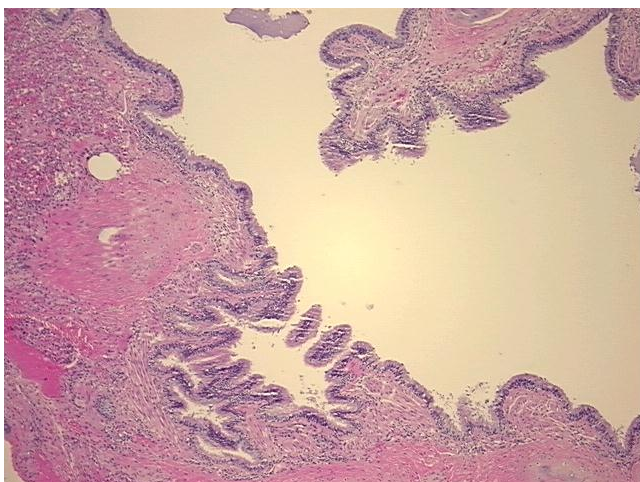
Product data:

Product Type:	FFPE Sections
Disease State:	Other Disease
Diagnosis Category:	Pneumonia
Tissue:	Lung
Frozen Sample ID:	PA00008E18
Case ID:	CI7000000394
Tissue of Origin:	Lung
Site of Finding:	Lung
Appearance:	L
Sample Diagnosis (from Pathology Verification):	Pneumonia, post-obstructive
Normal:	0%
Lesional:	100%
Tumor:	0%
Tumor Hypo/Acellular Stroma:	0%
Tumor Hypercellular Stroma:	0%
Necrosis:	0%
Pathology Verification notes from H&E review:	Inflammation: Mild Mixed inflammatory infiltrate; Non Tumor Structures: 40% Alveoli, 20% Bronchioles, 40% Fibrovascular septa
CASE Diagnosis (from medical center path report):	Tumor of lung, carcinoid, atypical
Age:	57
Gender:	Male
Race:	White or Caucasian

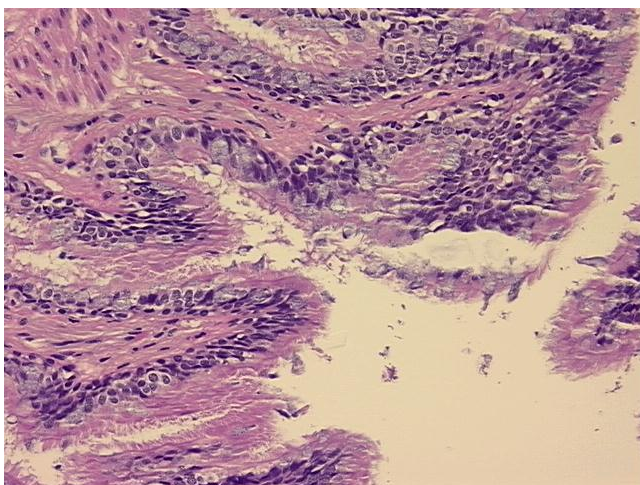


[View online »](#)

Tumor Grade:	Not Reported
Minimum Stage Grouping:	Not Reported
T (Extent of Primary Tumor):	Not Reported
N (Lymph node metastasis):	Not Reported
M (Distant metastasis):	Not Reported
Diagnostic Test Results:	Cytokeratin (Pan) ~ Keratin, Pan ! by IHC,Positive; Synaptophysin ~ SYN ! by IHC,Positive; Chromogranin A ~ Parathyroid secretory protein 1 ! by IHC,Positive; Thyroid transcription factor 1 ~ TTF1 ! by IHC,Negative
Storage:	Store FFPE tissue sections at +4°C.
Stability:	All FFPE tissue sections are stable for 1 year from date of purchase.

Product images:

4x Image



20x Image