

## Product datasheet for **CS716814**

### Tissue FFPE Sections, Breast

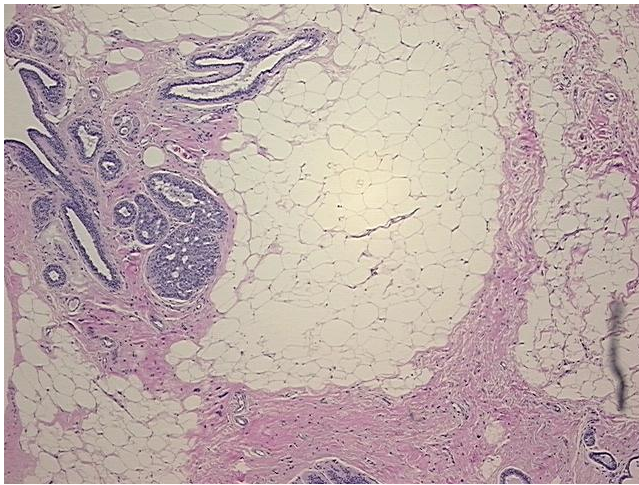
#### Product data:

Product Type:	FFPE Sections
Disease State:	Other Disease
Diagnosis Category:	Hyperplasia
Tissue:	Breast
Frozen Sample ID:	PA11B42688
Case ID:	CI7000000375
Tissue of Origin:	Breast
Site of Finding:	Breast
Appearance:	L
Sample Diagnosis (from Pathology Verification):	Ductal hyperplasia of breast, atypical
Normal:	90%
Lesional:	10%
Tumor:	0%
Tumor Hypo/Acellular Stroma:	0%
Tumor Hypercellular Stroma:	0%
Necrosis:	0%
Pathology Verification notes from H&E review:	Non Tumor Structures: 25% Glandular epithelium, 40% Stroma, 35% Adipose tissue
CASE Diagnosis (from medical center path report):	Adenocarcinoma of breast, ductal
Age:	61
Gender:	Female
Race:	White or Caucasian

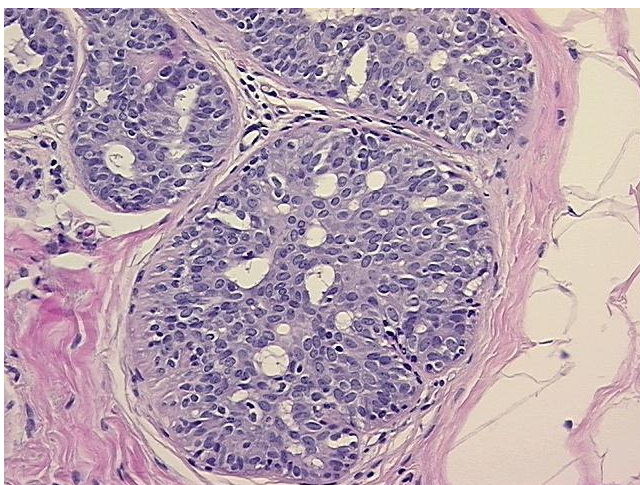


[View online »](#)

<b>Tumor Grade:</b>	Nottingham G1: 3-5 points Low combined grade (favorable)
<b>Minimum Stage Grouping:</b>	I
<b>T (Extent of Primary Tumor):</b>	T1c
<b>N (Lymph node metastasis):</b>	N0 (i-)
<b>M (Distant metastasis):</b>	MX
<b>Diagnostic Test Results:</b>	Progesterone receptor ~ PR ! by IHC,Positive; Estrogen receptor ~ ER ! by IHC,Positive; HER2 ~ ERBB2 ~ Neu ! by IHC,Negative; Cytokeratin AE1/AE3 ~ AE1/AE3 ! by IHC,Negative
<b>Storage:</b>	Store FFPE tissue sections at +4°C.
<b>Stability:</b>	All FFPE tissue sections are stable for 1 year from date of purchase.

**Product images:**

4x Image



20x Image